

FINE JEWELRY

Monday April 18, 2016

New York



Bonhams

NEW YORK



FINE JEWELRY

Monday April 18, 2016 at 3pm
New York

BONHAMS

580 Madison Avenue
New York, New York 10022
bonhams.com

PREVIEW

Los Angeles

Friday March 18, 12pm to 5pm
Saturday March 19, 12pm to 5pm
Sunday March 20, 12pm to 5pm

Hong Kong

Private Appointments Only
Tuesday March 29
Wednesday March 30

New York

Thursday April 14, 10am to 5pm
Friday April 15, 10am to 5pm
Saturday April 16, 12pm to 5pm
Sunday April 17, 12pm to 5pm
Monday April 18, 10am to 3pm

SALE NUMBER: 23340

Lots 1 - 138

CATALOG: \$35

BIDS

+1 (212) 644 9001
+1 (212) 644 9009 fax

To bid via the internet please visit
www.bonhams.com/23340

Please note that telephone bids must be submitted no later than 4pm on the day prior to the auction. New bidders must also provide proof of identity and address when submitting bids.

Please contact client services with any bidding inquiries.

Please see pages 72 to 75 for bidder information including conditions of sale, after-sale collection and shipment.

INQUIRIES

Matthew Girling
Group Jewelry Director
matthew.girling@bonhams.com

New York

+1 (212) 461 6526
Susan Abeles, Director, US Jewelry
Caroline Bostock
Camille Barbier
Lauren Robbins
lauren.robbins@bonhams.com

Los Angeles

+1 (323) 436 5424
Dana Ehrman, Director
Claire De Biasio-Paris
Kelly Sitek
kelly.sitek@bonhams.com

San Francisco

+1 (415) 503 3280
Deborah Boskin
Shannon Beck

Automated Results Service
+1 (800) 223 2854

ILLUSTRATIONS

Front cover: Lot 138
Inside front cover: Lot 137
Inside back cover: Lot 136
Back cover: Lot 86

COLLECTION

Successful buyers with San Francisco and Los Angeles shipping addresses will have their purchases shipped to that office for pick-up. If you have a San Francisco or Los Angeles shipping address and do not want your purchase sent there for collection please notify us directly by Tuesday April 19. Purchases will be available for pick-up in San Francisco and Los Angeles on Wednesday April 20.

INDEX

NAME	LOT NUMBER
A. Tillander	16
Black Star & Frost.....	24, 32, 33
Boucheron.....	81
Buccellati.....	57
Bulgari.....	70, 91, 95
Cartier	19, 21, 29, 40, 46, 48, 55, 62, 68, 74, 88, 96, 99, 112, 123, 124
Carvin French	37, 66, 113, 114, 117, 120, 127, 129, 132
David Webb.....	38, 64
Fortunato Pio Castellani.....	67
Graff	45
Harry Winston.....	133
Hemmerle.....	51
Hermès	58
Marina B.....	35, 36, 39
Masenza for Afro	52
Oscar Heyman & Brothers	130
Paulding Farnham for Tiffany & Co.....	11
Piaget.....	42
Raymond Yard.....	6
Ruser	137
Tiffany & Co.	11, 44, 47, 60, 61, 72, 92, 126
Van Cleef & Arpels	17, 59, 69, 77, 84, 85, 86, 87, 93, 94, 115, 116

INCLUDING PROPERTY FROM

- Property of a New York Lady
- Property passed through descent of M.C Migel, New York
- Property from an Important New York Family
- Property of a Lady
- Property passed through the family by descent from the Estate of a New York Socialite
- Property sold to benefit Opera Santa Barbara

DIAMOND GRADING

COLOR

GIA	CIBJO	UK TRADITIONAL
D	Exceptional White +	Finest White
E	Exceptional White	Finest White
F	Rare White +	Fine White
G	Rare White	Fine White
H	White	White
I	Slightly Tinted White	Commercial White
J	Slightly Tinted White	Top Silver Cape
K	Tinted White	Top Silver Cape
L	Tinted White	Silver Cape
M TO N	Tinted Color	Light Cape
O TO R	Tinted Color	Cape
R TO Z	Tinted Color	Dark Cape

CLARITY

IF	Internally Flawless	No inclusions and only insignificant surface blemishes when viewed under 10X magnification
VVS1 - VVS2	Very Very Slightly Included	Minute inclusions that are incredibly difficult to see under 10X magnification, generally only visible from the back of the stone and may be removed easily by repolishing
VS1 - VS2	Very Slightly Included	Minor inclusions that range from difficult (VS1) to slightly easier (VS2) to see under 10X magnification
S11 - 2	Slightly Included	Noticeable inclusions that are easy (S11) or very easy (S12) to see under 10X magnification
I1 - 3	Obvious Inclusions	Obvious inclusions that are easily visible under 10X magnification and in some cases may even be seen without magnification

RING SIZES

ENGLISH	METRIC	AMERICAN	FRENCH/JAPANESE
A	37.8252	½	-
A½	38.4237	¾	-
B	39.0222	1	-
B½	39.6207	1¼	-
C	40.2192	1½	-
C½	40.8177	1¾	-
D	41.4162	2	1
D½	42.0147	2¼	2
E	42.6132	2½	-
E½	43.2117	2¾	3
F	43.8102	3	4
F½	44.4087	3¼	-
G	45.0072	3½	5
G½	45.6057	3¾	-
H	46.2042	4	6
H½	46.8027	4¼	-
I	47.4012	4½	7
I½	47.9997	4¾	8
J	48.5982	5	-
J½	49.1967	5¼	9
K	49.7952	5½	10
K½	50.3937	5¾	-
L	50.9922	6	11
L½	51.5907	6¼	-
M	52.1892	6½	12
M½	52.7877	6¾	13
N	53.4660	7	-
N½	54.1044	7¼	14
O	54.7428	7½	15
O½	55.3812	7¾	-
P	56.0196	8	16
P½	56.6580	8¼	-
Q	57.2964	8½	17
Q½	57.9348	8¾	18
R	58.5732	9	-
R½	59.2116	9¼	19
S	59.8500	9½	20
S½	60.4884	9¾	-
T	61.1268	10	21
T½	61.7652	10¼	22
U	62.4026	10½	-
U½	63.0420	10¾	23
V	63.6804	11	24
V½	64.3188	11¼	-
W	64.8774	11½	25
W½	65.4759	11¾	-
X	66.0744	12	26
X½	66.6729	12¼	-
Y	67.2714	12½	-
Y½	67.8699	12¾	-
Z	68.4684	13	-



1



3



2

**1
A COLLECTION OF DIAMOND
AND GEM-SET BANGLE BRACELETS**

each designed as channel-set bands, four comprising old round-cut diamonds, one with square-cut emeralds, one with square-cut rubies, one with square-cut sapphires, and two with square-cut onyx; *estimated total diamond weight: 23.20 carats; estimated total emerald weight: 8.80 carats; estimated total ruby weight: 7.90 carats; estimated total sapphire weight: 7.70 carats; mounted in either platinum or gold; average interior diameter approximately: 2 3/4in.; two diamonds deficient*

US\$25,000 - 35,000

**2
A PAIR OF DIAMOND DROP EARRINGS**

each set with an old European-cut diamond, suspending from an old mine-cut diamond, within an articulated mount; *accompanied by a fitted box; estimated total diamond weight: 4.00 carats; mounted in gold; length: 3/4in.*

US\$12,000 - 16,000

**3
A DIAMOND SOLITAIRE RING**

centering an old European-cut diamond, weighing 3.24 carats, the shoulders set with round brilliant-cut diamonds; *mounted in platinum; size 6*

US\$7,500 - 9,500

4



5



6



4

A DIAMOND SOLITAIRE RING

centering a cushion-cut diamond, weighing 5.22 carats, flanked by two bezel-set bullet-shaped diamonds; *mounted in platinum; size 6*

US\$25,000 - 35,000

5

A DIAMOND AND EMERALD BRACELET

the articulated strap designed as a series of interchanging circular and openwork panels, each circular panel centering a round brilliant-cut diamond within a calibré-cut emerald and diamond surround, set throughout with step-cut and round brilliant-cut diamonds; *estimated total diamond weight: 15.45 carats; mounted in platinum; length: 7 7/8in.*

US\$15,000 - 20,000

6

AN ART DECO DOUBLE CLIP CONVERTIBLE DIAMOND BROOCH, RAYMOND YARD, CIRCA 1930

the lozenge-shaped brooch separating into a pair of shield-shaped clips, set with four old European-cut diamonds, weighing approximately 1.65, 1.45, 1.65 and 1.25 carats, set throughout with numerous old European, baguette, and bullet-shaped diamonds; *signed Yard Inc.; estimated remaining diamond weight: 4.50 carats; mounted in platinum; length: 2 1/4in.*

US\$15,000 - 20,000



7

7
A PAIR OF DIAMOND EARRINGS
 each chandelier composed of graduated swags, set throughout with old European-cut diamonds, suspended from a similarly-cut diamond cascading foliate motif surmount; *estimated total diamond weight: 12.60 carats; mounted in gold and silver; length: 2 1/2in.*

US\$12,000 - 18,000



8

8
AN ART DECO SAPPHIRE AND DIAMOND RING, CIRCA 1920
 the pierced oval panel design with a central collet set oval-cut sapphire, within a single-cut diamond and calibr -cut sapphire surround; *mounted in platinum-topped gold; size 6 1/2*

US\$3,000 - 5,000



9

9
A SAPPHIRE AND DIAMOND PENDANT/BROOCH
 centering a cushion-shaped sapphire, weighing 3.85 carats, within a scrolling foliate form mount set with old European-cut diamonds, enhanced by two pear-shaped sapphires; *estimated total diamond weight: 6.95 carats; estimated total remaining sapphire weight: 2.50 carats; mounted in silver-topped gold; length: 3 1/4in.*

US\$6,500 - 8,500



10



11



12

PROPERTY OF A NEW YORK LADY

10
A PAIR OF NATURAL PEARL AND DIAMOND EAR PENDANTS
 each suspending a natural pearl drop, measuring 8.34mm and 8.40 x 8.26mm, from a hanging row of seven round brilliant-cut diamonds; *mounted in platinum; length: 1 1/2in.*

US\$5,000 - 7,000

Accompanied by GIA report #6173252249, dated August 10, 2015, stating the pearls as: natural, saltwater, no indications of treatment.

PROPERTY OF VARIOUS OWNERS

11
AN ENAMEL, DIAMOND AND GOLD FLOWER BROOCH, ATTRIBUTED TO PAULDING FARNHAM FOR TIFFANY & CO.
 designed as two enamel flowers, each centering an old European-cut diamond with single-cut diamond pistils, to a gold stem; *signed Tiffany & Co.; length: 2in.*

US\$15,000 - 20,000

12
A DIAMOND BROOCH
 stylized as a diamond leaf, accented by five pear-shaped rose-cut diamonds, the whole set throughout with rose-cut diamonds; *mounted in gold and silver; length: 2 1/2in.*

US\$4,000 - 6,000



13

**PROPERTY PASSED THROUGH DESCENT
OF M.C MIGEL, NEW YORK**

13
A SET OF MOONSTONE JEWELRY, ATTRIBUTED TO LOUIS COMFORT TIFFANY, TIFFANY & CO., CIRCA 1915, AND A PAIR OF WHITE GOLD AND MOONSTONE EARRINGS
 comprising a necklace, designed as a series of graduated filigree links, enhanced by oval moonstone cabochons, a bracelet, en suite, and a pair of earrings of similar design; *necklace and bracelet signed Tiffany & Co.; earrings unsigned, later added; mounted in platinum and gold; necklace length: 16 3/8in.; bracelet length: 7 1/2in.; earring length: 1in.*

US\$20,000 - 30,000

Moses Charles "M.C." Migel is best known for his philanthropic advocacy for the blind and visually impaired. After moving to New York, he started his own silk manufacturing company, becoming successful and by 1912, he was able to devote his acumen to philanthropic interests.

In 1921, he helped establish the American Foundation for the Blind and became their first president. During the following four decades he worked tirelessly in the international forum for visually disabled peoples. M.C. Migel was the recipient of numerous awards including the highest acknowledgment - the Legion of Honor.

This necklace and bracelet were probably purchased at Tiffany's Fifth Avenue and 37th Street store in New York following the financial security of M.C. Migel. The set was created most likely under the direction of head designer Meta Overbeck for Louis Comfort Tiffany. The pale color palette, fine wire filigree and cabochon moonstones were favored in her creations. It is unusual to find a set that has remained intact, making this lot a collectible.

14



15



16



PROPERTY OF VARIOUS OWNERS

14
A FANCY COLORED SAPPHIRE AND DIAMOND RING
centering a light violet sapphire, measuring approximately 12.2 x 10.5 x 6.51 mm, within a geometric surround of round brilliant-cut pavé-set diamonds, accented by rectangular-cut diamonds; *mounted in platinum; size 3 3/4*

US\$15,000 - 25,000

Accompanied by AGL report # CS 1073899, dated March 14, 2016 stating the light violet sapphire is: Ceylon (Sri Lanka) origin, no indications of heat or clarity enhancement.

15
A DIAMOND BRACELET
designed as a line of raised floral heads with old European-cut diamonds, spaced by interlinking flexible links of rose-cut diamonds; *estimated total diamond weight: 10.60 carats; length: 6 3/4in.*

US\$7,000 - 9,000

16
A YELLOW SAPPHIRE AND DIAMOND RING, A. TILLANDER
centering a yellow cushion modified mixed-cut sapphire, measuring approximately 13.0 x 10.08 x 6.80mm, set with rose-cut diamonds within a foliate design mount; *signed A.Tillander; mounted in gold and silver; size 6 3/4*

US\$8,000 - 12,000

Accompanied by AGL report # CS 1073312, dated February 11, 2016, stating the yellow sapphire as: Ceylon (Sri Lanka) origin, no indications of heat or clarity enhancement.



17



19



18

**17
A DIAMOND AND 18K GOLD “DAISY”
MINAUDIÈRE, VAN CLEEF & ARPELS,
CIRCA 1950**

with an all-over stylized floral etched design, the cover set with oval clusters of single-cut diamonds forming the pistils of the carved flowerheads, the cover opens to reveal a fitted interior with a fitted mirror to the underside of the cover, the base reveals three compartments, one removable lipstick holder of similar design to the outer cover, a powder box and a multi-function compartment; *signed La Minaudiere De Van Cleef & Arpels; no.72844; estimated total diamond weight: 2.30 carats; gross weight approximately: 473.0 grams; dimensions: 5 1/2 x 3 1/8 x 3/4in.*

US\$18,000 - 25,000

**18
A DIAMOND SOLITAIRE RING**

set with a round brilliant-cut diamond, weighing 2.29 carats; *mounted in platinum; size 5 1/2*

US\$15,000 - 20,000

Accompanied by GIA report # 1172492776, dated February 18, 2106, stating the diamond as: F color, VS1 clarity.

**19
A DIAMOND WATCH, CARTIER**

the rectangular dial decorated with Arabic numerals, between a single-cut diamond bezel, accented by a geometric design of baguette-cut and square-cut diamonds, with a rose-cut diamond winding crown, to a black silk grosgrain strap with diamond deployant clasp; *signed Cartier, no.19276 and no.22993; accompanied by a signed box. estimated total diamond weight: 1.10 carats; mounted in platinum; inner diameter: 2in.*

US\$10,000 - 15,000



20



21

22

**20
AN ART NOUVEAU EMERALD,
CULTURED PEARL AND GOLD PERFUME
BOTTLE, FRENCH, CIRCA 1895**

designed as a carved hexagon with gold foliage accents, enhanced by cultured pearls and oval emerald cabochons; with French assay marks and maker's mark; measuring: 2 1/8 x 5/8 x 2 3/4in.

US\$3,000 - 5,000

**21
AN EMERALD AND DIAMOND BRACELET**

designed as a pavé-set diamond band, enhanced by round brilliant-cut diamonds, centering a line of square step-cut emeralds; signed Cartier, no.58436; estimated total diamond weight: 7.00 carats; mounted in 18k white gold; length: 6 3/4in.

US\$40,000 - 60,000

**22
AN ANTIQUE EMERALD AND DIAMOND
BRACELET, RUSSIAN, 19TH CENTURY**

composed of raised triangular panels set with old European-cut diamonds and emerald cabochons, connected by openwork circular links set with single-cut diamonds, to the concealed clasp; accompanied by a detachable pendant clasp; estimated total diamond weight: 9.30 carats; mounted in 14k gold and silver; length: 8in.; one diamond deficient

US\$10,000 - 15,000



23

24

23

A SAPPHIRE AND DIAMOND RING

centering a sugarloaf cabochon sapphire, weighing 5.40 carats, within a pavé-set double row surround, enhanced with round brilliant-cut diamond shoulders of foliage motif; *estimated total diamond weight: 1.40 carats; mounted in platinum; size 5 1/4*

US\$4,000 - 6,000

Accompanied by AGL report # CS 62620 B, dated September 24, 2015, stating the sapphire as: Burma (Myanmar) origin, no indications of heat or clarity enhancement.

PROPERTY FROM AN IMPORTANT NEW YORK FAMILY

24

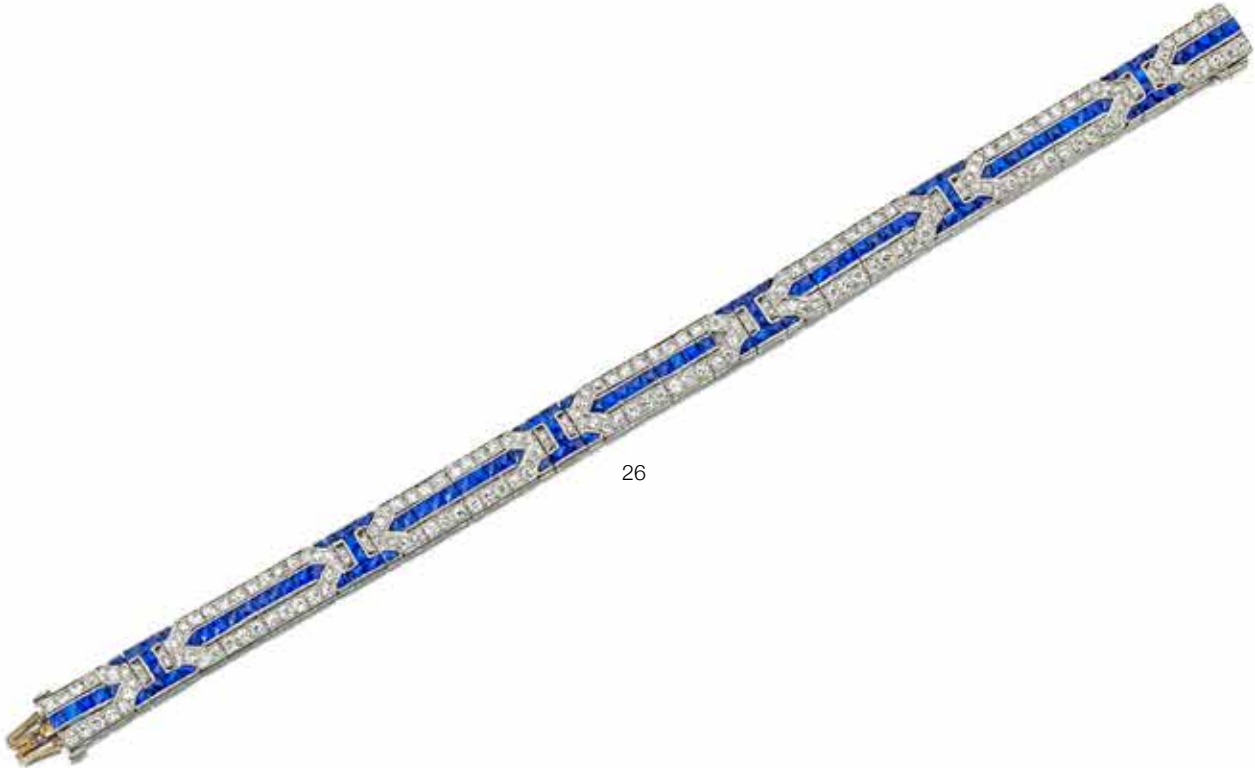
**AN ART DECO DIAMOND AND SAPPHIRE BRACELET,
BLACK STARR & FROST, CIRCA 1920**

set to the front with three round brilliant-cut sapphires, flanked by square step-cut diamonds on a round brilliant-cut diamond strap within a millegrain setting; *signed BS&F; estimated total diamond weight: 2.15 carats; mounted in platinum; length: 6 7/8in.*

US\$7,000 - 9,000



25



26

PROPERTY OF ANOTHER OWNER

25

A SAPPHIRE AND DIAMOND RING

centering an oval mixed-cut sapphire, measuring approximately 14.89 x 11.50 x 4.60mm, framed by marquise-shaped, baguette-shaped and round brilliant-cut diamonds; *estimated total diamond weight: 3.00 carats; mounted in platinum; size 8 1/4*

US\$18,000 - 25,000

Accompanied by AGL report # CS 70098, dated September 9, 2015, stating the sapphire as: Ceylon (Sri Lanka) origin, no indications of heat or clarity enhancement.

PROPERTY FROM AN IMPORTANT NEW YORK FAMILY

26

AN ART DECO DIAMOND AND SAPPHIRE BRACELET, CIRCA 1920

designed as an articulated strap, set with central rows of French-cut sapphires, enhanced by round brilliant-cut diamonds within a millegrain setting; *estimated total diamond weight: 2.10 carats; mounted in platinum; length: 7 1/2in.*

US\$10,000 - 15,000

27



28



29



PROPERTY OF VARIOUS OWNERS

27

AN EMERALD AND DIAMOND RING

centering a square step-cut emerald, weighing 5.01 carats, within a round brilliant-cut diamond surround; *estimated total diamond weight: 1.10 carats; mounted in platinum and 18k gold; size 6 1/4*

US\$28,000 - 35,000

Accompanied by C. Dunaigre report # CDC 1401308, dated January 31, 2014, stating the emerald as: Colombian origin, indications of insignificant clarity enhancement.

28

A DIAMOND BRACELET

composed of twenty-eight round brilliant-cut diamonds, within a box link setting; *estimated total diamond weight: 14.00 carats; mounted in platinum; length: 7in.*

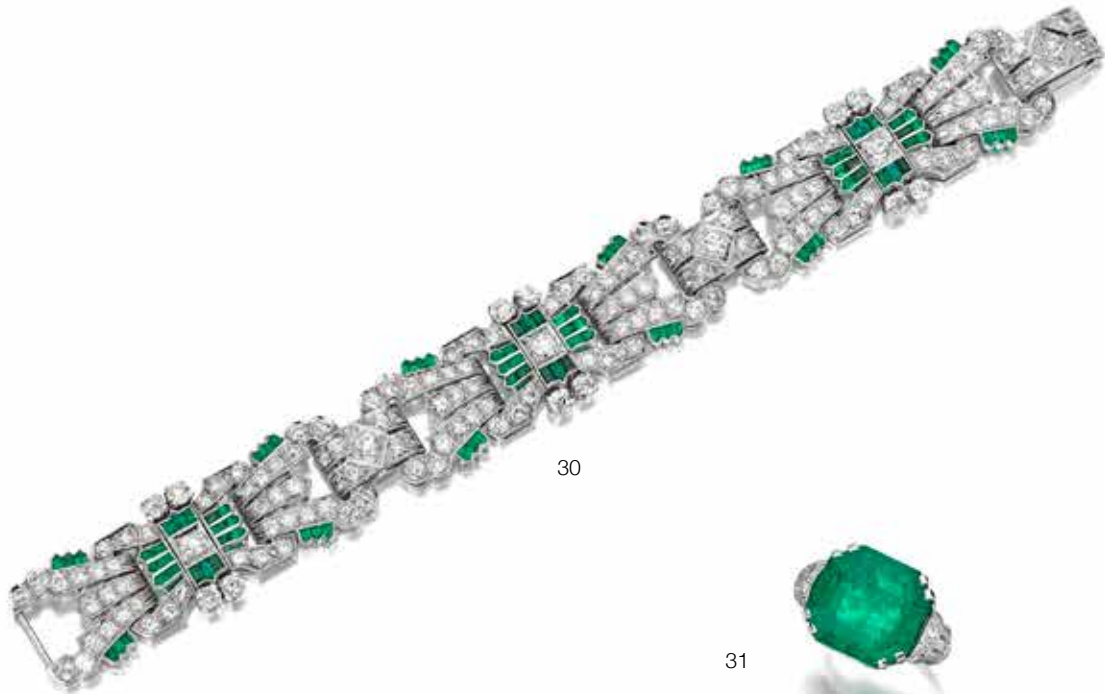
US\$9,000 - 12,000

29

AN EMERALD AND DIAMOND BRACELET, CARTIER

styled as four openwork panels with marquise-cut diamond foliate design, adjoined with baguette-cut diamond links, enhanced with prong-set oval-cut emeralds within a baguette-cut diamond surround, joined by a baguette-cut diamond-set clasp; *signed Cartier; estimated total diamond weight: 7.35 carats; mounted in platinum and 18k gold; length: 7in.*

US\$25,000 - 35,000



30

31

30

AN EMERALD AND DIAMOND BRACELET

the articulated strap composed of three openwork panels, pierced and millegrain-set throughout with brilliant-cut diamonds, enhanced with baguette-cut emeralds; *estimated total diamond weight: 11.00 carats; mounted in platinum; length: 7 3/4in.*

US\$6,000 - 8,000

31

AN EMERALD AND DIAMOND RING

set with a rectangular step-cut emerald, weighing 18.84 carats, between stepped single-cut and baguette-cut diamond shoulders; *mounted in platinum; size 5 1/4*

US\$28,000 - 35,000

Accompanied by AGL report # CS 71851, dated December 3, 2015, stating the emerald as: Colombian origin, no indications of heat and standard clarity enhancement of traditional materials.



32

32

A SAPPHIRE AND DIAMOND RING, BLACK STARR & FROST
centering an antique cushion brilliant-cut sapphire, weighing 3.49 carats, within a diamond-set ornate basket and split shank; *signed BS&F; mounted in 18k gold; size 5*

US\$250,000 - 350,000

Accompanied by AGL report # CS 1073522, dated February 23, 2016, stating the sapphire as: Kashmir origin, no indications of heat.

Accompanied by Gubelin report # 15067378, dated June 30, 2015, stating the sapphire as: Kashmir origin, no indications of heat.

Accompanied by SSEF report # 79849, dated April 17, 2015, stating the sapphire as: Kashmir origin, no indications of heat.



33

33

A BELLE ÉPOQUE DIAMOND AND FANCY COLORED DIAMOND THREE-STONE RING, BLACK STARR & FROST, CIRCA 1915
centering an old European-cut diamond, weighing approximately 2.00 carats, within a pierced and openwork mount enhanced by pear-shaped brilliant-cut fancy yellow diamonds, weighing 1.15 and 1.07 carats; *signed BS&F; mounted in platinum; size 5 1/2*

US\$35,000 - 55,000

Accompanied by GIA report # 2155800763 dated November 25, 2013, stating the 1.15 carats diamond as: Fancy Vivid Yellow color, VS1 clarity.

Accompanied by GIA report # 2165042766 dated May 15, 2014, stating the 1.07 carats diamond as: Fancy Intense Yellow color, VVS2 clarity.



34

34

A BELLE ÉPOQUE SAPPHIRE AND DIAMOND THREE-STONE RING, CIRCA 1915
centering a cushion mixed-cut sapphire, measuring approximately 7.9 x 6.7 x 5.0mm, within an openwork mount, enhanced by round brilliant-cut diamonds; *estimated total diamond weight: 1.75 carats; mounted in platinum; size 5 1/4*

US\$20,000 - 30,000

Accompanied by AGL report # CS 1073066, dated January 27, 2016, stating the sapphire as: Kashmir origin, no indications of heat or clarity enhancement.





35

36

37

35
**A PAIR OF GEM-SET "CIMIN"
EARRINGS, MARINA B.**

set with six interchangeable gemstone beads, to a central removable polished gold screw; signed *Marina B.*, no. 3702 and no.3132; accompanied by a signed pouch and box; mounted in 18k gold; diameter: 1/2in.

US\$3,000 - 5,000

36
**A GEM-SET AND CULTURED PEARL
"CARDAN" NECKLACE, MARINA B.**

composed of cultured pearls, alternating with green tourmaline and blue sapphire beads; signed *Marina B.*, no. 1818; accompanied by a signed pouch; mounted in 18k gold; length: 16 3/4in.

US\$7,000 - 9,000

37
**A SAPPHIRE AND DIAMOND RING,
CARVIN FRENCH**

centering an oval cabochon sapphire, weighing 16.12 carats, enclosed within a round brilliant-cut diamond border; with maker's mark; estimated total diamond weight: 2.70 carats; mounted in 18k gold; size 5 1/2

US\$20,000 - 30,000

Accompanied by AGL report # CS 65490, dated January 9, 2015, stating the sapphire as: Ceylon (Sri Lanka) origin, no indications of heat or clarity enhancement.

38



39



40



38

A ROCK CRYSTAL RING, DAVID WEBB
set with an oval-shaped rock crystal, within a gold geometric surround; *signed Webb*; mounted in 18k gold; size 6

US\$3,000 - 5,000

39

A GEM-SET AND CULTURED PEARL "CARDAN" BRACELET, MARINA B.
composed of cultured pearls, alternating with green tourmaline and blue sapphire beads; *signed Marina B., no.2875*; accompanied by a signed box; mounted in 18k gold; length: 8 1/2in.

US\$5,000 - 7,000

40

A PAIR OF SAPPHIRE AND DIAMOND EAR CLIPS, CARTIER
each half-hoop set with an oval-cut sapphire, with circular-cut diamond trim; *signed Cartier, no. 600569*; sapphires each weigh approximately 1.50 carats; estimated total diamond weight: 1.00 carat; mounted in 18k gold; length: 3/4in.

US\$4,000 - 6,000



41

42

PROPERTY OF A LADY

**41
A RUBY AND DIAMOND RING**

centering an oval mixed-cut ruby, weighing approximately 1.60 carats, within an undulating surround of tapered baguette-cut diamonds; *estimated total diamond weight: 2.00 carats; mounted in platinum; size 5 1/4*

US\$10,000 - 15,000

Accompanied by AGL report # CS 1073524, dated February 23, 2016, stating the ruby as: Burma (Myanmar-Mong Hsu) origin, indications of heat and minor clarity enhancement.

PROPERTY OF VARIOUS OWNERS

**42
A DIAMOND AND RUBY SET, PIAGET**

comprising a necklace and pair of pendant earrings set with round brilliant-cut diamonds, accented by a spiral formation of baguette-shaped rubies to a pear-shaped ruby drop; *signed Piaget; accompanied by a signed box; estimated total diamond weight: 18.00 carats; mounted in 18k gold; earring length: 2 1/4in; necklace inner diameter: 4 1/2in.*

US\$30,000 - 50,000



43



44



45

43^Y

A STAR RUBY AND CONCH PEARL FLOWER BROOCH

the principal flowerhead set with a star ruby stamen, within a surround of pink conch pearls petals accented by a single bezel-set diamond, the intertwining stems bezel-set with pink sapphires and diamonds; mounted in gold; length: 2 1/4in.

US\$6,000 - 8,000

44

A DIAMOND CLUSTER DOME RING

centering a round brilliant-cut diamond, weighing 1.69 carats, framed by a spiral surround of round brilliant-cut, baguette and marquise-shaped diamonds; *estimated total diamond weight: 3.35 carats; mounted in platinum; size 7 3/4*

US\$10,000 - 15,000

Accompanied by GIA report # 2173487910 dated February 17, 2016, stating the diamond as: E color, VS1 clarity.

Accompanied by a copy of a Tiffany & Co. valuation dated 1940, stating the diamond is 1.70 carats, diamond no. 591328.

45

A DIAMOND BANGLE BRACELET, GRAFF

centering a marquise-cut diamond within a pavé-set round brilliant-cut diamond surround with gold ribbed accent, to the pavé-set diamond rigid bombé band; *signed Graff; estimated total diamond weight: 17.50 carats; mounted in 18k gold; diameter: 2 1/4in.*

US\$18,000 - 25,000



46

46
AN 18K TRI-COLOR GOLD “TRINITY” BANGLE BRACELET, CARTIER
composed of three interlocking tri-colored gold bangles; *signed Cartier, no.GL7925; accompanied by a signed pouch; gross weight approximately: 103.7 grmas ; diameter: 2 1/2in.*

US\$8,000 - 12,000

Accompanied by a Cartier report, dated June 15, 2011, stating the metal as: 18k gold or platinum, and is an authentic Cartier jewel.



47

47
A TURQUOISE, DIAMOND AND ENAMEL BROOCH, TIFFANY & CO.
designed as a flowerhead, the petals composed of enamel within gold borders, accented with round brilliant-cut diamond pistils; *signed Tiffany; estimated total diamond weight: 1.00 carat; mounted in 18k gold; diameter: 2 3/8in.*

US\$7,000 - 10,000



49



48



50

48
A DIAMOND BROOCH, CARTIER
designed as a braided undulating gold wire-work scroll fan, accented with round brilliant-cut diamonds; *signed Cartier Inc.*; *estimated total diamond weight: 2.50 carats; mounted in 18k gold; length: 1 1/2in.*

US\$2,000 - 3,000

49
A DIAMOND NECKLACE
the flexible line of sixty-four round brilliant-cut diamonds, graduating in size from the center; *estimated total diamond weight: 43.00 carats; mounted in 18k gold; length: 14 1/2in.*

US\$25,000 - 35,000

50
A DIAMOND THREE-STONE RING
set with three oval-cut diamonds, centering an oval-cut fancy yellow diamond, weighing 4.24 carats; *estimated remaining diamond weight: 1.20 carats; mounted in platinum and 18k gold; size 6 1/4*

US\$15,000 - 25,000

Accompanied by GIA report # 5172509063, dated March 2, 2016, stating the diamond as: Fancy Yellow color, VS2 clarity.



51

**51
A DIAMOND RING, HEMMERLE**

centering a pear-shaped modified brilliant-cut diamond, weighing 4.79 carats, flanked by trapeze and baguette-cut diamonds; *signed GH*; mounted in 18k gold; size 6 1/2

US\$60,000 - 90,000

Accompanied by GIA report # 1156035283 dated October 4, 2012 stating the diamond is: G color, VVS2 clarity.

Accompanied by HRD Antwerp report # 13008251002 dated March 21, 2013 stating the diamond is: F color, VVS2 clarity.

52

**52
A DIAMOND AND 18K GOLD COLLAR NECKLACE, MASENZA FOR AFRO**

decorated as three articulated abstract figurines, each set with round brilliant-cut diamonds, within a textured gold surround; *signed Masenza and Afro*; inner diameter: 4 1/2in.

US\$3,500 - 5,000

Mario Masenza (1913-1985) was a jeweler with a family tradition of supplying jewelry to the Italian Royal Family from their workshop on the via del Corso in Rome. After the second World War Masenza was the first to invite artists into the workshop so that they could create 'intellectual fashion'. One such artist who dedicated himself to gold jewelry was the renowned Afro Basaldella (1912-1976). Basaldella is known for his jewelry as well as exhibiting at the Guggenheim in New York and creating a mural for the UNESCO headquarters in Paris.

53

54



55

56



53

A JADEITE JADE AND DIAMOND RING

centering a translucent jadeite cabochon of bright apple green color, measuring approximately 11.2 x 8.8 x 4.3mm, set between brilliant-cut diamonds; mounted in 18k gold; size 6 1/2

US\$5,000 - 7,000

Accompanied by Hong Kong Jade & Stone Laboratory Limited report # SJ 121931, dated September 10, 2015, stating that the jadeite as: natural color fei cui (jadeite jade) Type A, with no indication of resin.

54

A DIAMOND RING

centering a bezel-set round brilliant-cut diamond, weighing 1.43 carats, flanked by two bezel set triangular-cut diamonds, within a textured gold mount; mounted in 18k gold; size 5 1/2

US\$10,000 - 15,000

Accompanied by GIA report # 5316710 dated December 10, 1990, stating the diamond as: D color, VVS2 clarity.

55

A DIAMOND AND 14K GOLD BRACELET, CARTIER

designed as a flexible series of curb-link chains, with central link accented by single-cut diamonds; signed Cartier; gross weight approximately: 84.0 grams; length: 8in.

US\$3,500 - 4,500

PROPERTY OF A LADY

56

A JADEITE JADE AND DIAMOND RING

centering an oval-shaped jadeite jade cabochon, flanked by round brilliant-cut diamonds; mounted in 18k gold; size 5 3/4

US\$5,000 - 7,000

Accompanied by Mason-Kay report # 160222-4 dated February 22, 2016, stating the Jade as: Natural Jadeite Jade 'A' Jade, no dye or polymer detected.



57



58



59

PROPERTY OF VARIOUS OWNERS

57
A PAIR OF SAPPHIRE AND 18K GOLD EARRINGS, BUCCELLATI
each designed with textured bi-color gold maple leaves, centering a sapphire and white gold acorn; *signed Buccellati, no.L5493; length: 1 1/2in.*

US\$6,500 - 8,000

58
AN 18K GOLD KNOT BRACELET, HERMÈS, CIRCA 1950
designed as a flexible cord of rope work separated by weaved knots; *signed Hermès, no.99688; length: 9in.*

US\$12,000 - 15,000

59
A SAPPHIRE AND DIAMOND FLORAL BROOCH, VAN CLEEF & ARPELS
designed as a flower, with a cushion-cut diamond pistil surrounded by sapphire petals, supported by a gold stem of twisted rope design; *signed V.C.A., no.1V491-2; mounted in 18k gold; length: 2 1/4in.*

US\$2,000 - 3,000



60

60^Y

A LAPIS LAZULI, CORAL AND 18K GOLD BANGLE BRACELET, TIFFANY & CO., CIRCA 1940

the hinged bangle designed with alternating horizontal lines of lapis lazuli, coral and gold; signed T&Co.; gross weight approximately: 83.0 grams; inner diameter: 2 1/4in.

US\$10,000 - 15,000



61

61^Y

A MOTHER-OF-PEARL, BLACK ENAMEL AND 18K GOLD BANGLE BRACELET, TIFFANY & CO., CIRCA 1940

of checkered design with alternating mother of pearl, black enamel and gold; signed T&Co. gross weight approximately: 49.50 grams; inner diameter: 2 1/4in.

US\$6,000 - 8,000



62



63



64

62
**A DIAMOND, ENAMEL AND 18K GOLD
 "TRINITY" RING, CARTIER**
 designed as three interlocking tri-colored
 bands, one band enhanced with pavé-
 set diamonds, one band enhanced with
 black enamel; *signed Cartier, no. RG7876;*
accompanied by a signed box; estimated total
diamond weight: 1.40 carats; size 6

US\$6,000 - 8,000

63
A DIAMOND RING
 centering an old European-cut diamond,
 weighing approximately 2.90 carats, within
 a circular-cut diamond double surround;
estimated total remaining diamond weight:
2.10 carats; mounted in platinum; size 6

US\$12,000 - 15,000

64
**AN ENAMEL, EMERALD AND 18K GOLD
 DRESS SET, DAVID WEBB**
 comprising a pair of cufflinks and three shirt
 studs, the terminals designed as tiger heads
 applied with black enamel spots, the eyes set
 with emerald cabochons; *signed Webb*

US\$3,000 - 5,000



65

65
A DIAMOND AND EMERALD SUITE

comprising a necklace, with detachable pendant, and pair of pendant earrings of stylized foliate design set with round brilliant-cut diamonds and emeralds; *estimated total diamond weight: 12.30 carats; mounted in 18k gold; necklace inner diameter: 4in.; earring length: 2 1/2in.*

US\$15,000 - 18,000



66

66

AN EMERALD AND DIAMOND RING, CARVIN FRENCH

centering a square emerald-cut emerald, weighing 4.37 carats, flanked by baguette-cut diamonds; *with maker's mark; mounted in platinum and 18k gold; size 5 3/4*

US\$50,000 - 70,000

Accompanied by AGL report # CS 53314, dated February 19, 2013, stating the emerald as: Colombian origin, standard insignificant traditional clarity enhancement.

CARVIN FRENCH

Founded in New York in 1954 by two Frenchmen, André Chervin and Serge Carponcy, Carvin French, Inc. is known as one of the finest manufacturing jewelers in the world. They have designed or collaborated on the design and manufactured pieces that have become important benchmarks for the development of jewelry style in the second half of the 20th century and the 21st century. They are distinguished in their hand fabrication, intricate and unusual diamond and precious stone settings, top lapidary work, and rare enameling. Their team of some of the most talented artisans in the world brings together stones and craftsmanship with attention to detail and quality that is uncompromising.

Raymond C. Yard and Verdura were some of the first jewelry houses to realize Carvin French's potential and they commissioned them to hand-craft many of their pieces. Over the years, Carvin French became celebrated as the "jeweler's jeweler," creating magnificent pieces for Tiffany & Co. (particularly the designs of Donald Claflin and Angela Cummings), Cartier, Black Starr & Frost, Asprey, Bulgari, Van Cleef & Arpels, and Harry Winston, among many other top jewelry houses. Also, on special and rare occasions, Carvin French works with private individuals to create exclusive, custom-designed jewelry for their collections.

André Chervin assumed sole ownership of Carvin French in 1983 when Serge Carponcy retired, and today he continues to direct the firm, along with his nephew, Sylvain Chervin, and his daughter, Carole Chervin. Descending from a family of French jewelers going back to the 19th century, this family's legacy is imbued with the unparalleled traditions of French jewelry manufacturing.





67

68

67

AN ANTIQUE GOLD AND ANCIENT COIN PENDANT, ATTRIBUTED TO FORTUNATO PIO CASTELLANI, CIRCA 1850

centering a silver tetradrachm depicting Arsinoe II, with the initial K marked above the head, within a Neoclassical inspired gold frame; length 2 3/4in.

US\$3,000 - 5,000

Motivated by the archaeological findings unearthed in Italy during that decade, Fortunato Pio Castellani began to create Etruscan style jewelry in the mid 1830's. His ancient inspired creations were a notable change from the then popular French style jewels which he had been selling successfully for more than two decades.

Impassioned, Castellani studied, mastered and revived ancient goldsmithing techniques and used Roman and Etruscan style in his jewelry, which subsequently became fashionable. He was active in the trade of the artifacts, showing great interest in the discovery and preservation of ancient findings, as well as participating in the flourishing cultural and political forum with related interests.

The ancient silver coin is a tetradrachm of Arsinoe II, Queen of Thrace and Macedonia and, later, Egypt. Arsinoe II appeared in coinage reflecting her power and status and undoubtedly Castellani felt it important to incorporate this artifact into one of his contemporary jewels.

Further information:

Catalogue of "Classical and Antique Jewellery and Renaissance Works of Art", Christie's, Manson & Woods July 15, 1969

68

A SAPPHIRE AND DIAMOND NECKLACE, CARTIER

designed as a fancy link chain, centering an oval-shaped link, set with an oval-shaped sapphire cabochon, measuring approximately 9.00 x 5.70 x 5.90mm, enhanced by round brilliant-cut diamonds; signed Cartier, no.601025; accompanied by a signed box; mounted in 18k gold; gross weight approximately: 74.1 grams; length: 16in.

US\$5,000 - 7,000



69

**69
A PAIR OF DIAMOND, EMERALD,
SAPPHIRE, RUBY AND CULTURED PEARL
EAR PENDANTS, VAN CLEEF & ARPELS**

each set with a round cultured pearl within an emerald, diamond and ruby surround, suspending an articulated teardrop-shaped cultured pearl, surmounted by a diamond cap within a diamond, sapphire and emerald fluted border; *signed Van Cleef & Arpels; estimated total diamond weight: 6.40 carats; mounted in 18k gold; length: 2 1/4in.*

US\$20,000 - 30,000



70

**70
A DIAMOND "SPIGA" COLLAR
NECKLACE, BULGARI**

of chevron design, set with intermittent links of round brilliant-cut diamonds; *signed Bulgari; estimated total diamond weight: 2.40 carats; mounted in 18k gold; gross weight approximately: 148.0 grams; inner diameter: 4 1/2in.*

US\$12,000 - 18,000



71

**71
A SAPPHIRE AND DIAMOND RING**

centering an oval-shaped mixed-cut sapphire, weighing 16.83 carats; framed by bezel-set round brilliant-cut diamonds; *estimated total diamond weight: 2.00 carats; mounted in 18k gold; size 6 1/4*

US\$85,000 - 100,000

Accompanied by GRS report # 2015-032621, dated April 23, 2015, stating the sapphire as: Burma (Myanmar) origin, no indication of thermal treatment.



72



73



74

PROPERTY PASSED THROUGH THE FAMILY BY DESCENT FROM THE ESTATE OF A NEW YORK SOCIALITE

PROPERTY OF VARIOUS OWNERS

72

A RUBY AND 18K GOLD BRACELET, TIFFANY & CO.

the basket weave band accented with circular-cut rubies in an alternating diagonal pattern; signed *Tiffany & Co.*; gross weight approximately: 76.0 grams; length: 7 1/4in.

US\$4,000 - 6,000

73

A RUBY AND DIAMOND RING

centering an oval mixed-cut ruby, measuring approximately 10.17 x 7.15 x 4.65mm, within an old European-cut diamond surround; estimated total diamond weight: 2.10 carats; mounted in 18k gold; size 6

US\$25,000 - 35,000

Accompanied by AGL report # CS 1073313, dated February 11, 2016, stating the ruby as: Burma (Myanmar - Mong Hsu) origin, indications of heat and insignificant clarity enhancement.

74

A PAIR OF DIAMOND AND TOURMALINE EAR CLIPS, CARTIER, FRENCH

each designed as a flowerhead, centering a round tourmaline, accented by round brilliant-cut diamond petals; signed *Cartier*, no.2271, with French assay marks; estimated total diamond weight: 8.70 carats; mounted in 18k gold and silver; diameter: 1 1/8in.

US\$15,000 - 20,000



75

75
A DIAMOND RING AND WEDDING BAND SET
centering an emerald-cut diamond, weighing approximately 1.70 carats, flanked by baguette-cut diamond shoulders, and an eternity band with round brilliant-cut diamonds; *mounted in platinum; size 5 1/2*

US\$7,000 - 9,000



76

76
A DIAMOND AND 18K GOLD CLUTCH
of woven mesh design, scalloped edge highlighted with round brilliant-cut diamonds; *gross weight approximately: 426.0 grams; measuring: 6 3/8 x 3 1/2 in.*

US\$8,000 - 12,000



77

77
A DIAMOND BOW BROOCH, VAN CLEEF & ARPELS
centering a marquis-cut diamond amid scrolling ribbons set with round brilliant-cut diamonds; *signed Van Cleef & Arpels Paris, no. 17413; estimated total diamond weight: 11.70 carats; mounted in 18k gold; gross weight approximately: 46.0 grams; length: 3 in.*

US\$10,000 - 15,000



78

79

**78
A PAIR OF DIAMOND PENDANT EARRINGS**

each suspending a round brilliant-cut diamond, weighing 1.59 and 1.53 carats, from an articulated round brilliant and marquise-cut diamond surmount; *estimated remaining diamond weight: 1.80 carats; mounted in 18k gold; length: 1 1/4in.*

US\$12,000 - 15,000

Accompanied by GIA report # 16751304, dated November 27, 2007, stating the 1.59 carats diamond as: F color, SI2 clarity.

Accompanied by GIA report # 16751319, dated November 20, 2007, stating the 1.53 carats diamond as: F color, SI2 clarity.

Accompanied by GIA report # 17001968, dated March 7, 2008, stating the .56 carat diamond as: F color, SI1 clarity.

Accompanied by GIA report # 17058090, dated April 1, 2008, stating the .55 carat diamond as: F color, SI2 clarity.

**79
A RUBY AND DIAMOND NECKLACE**

designed as articulated links of oval-cut rubies within a round brilliant-cut diamond surround, spaced with alternating round brilliant-cut diamonds of floral design, to graduated diamond links of similar design; *estimated total diamond weight: 18.80 carats; estimated total ruby weight: 9.60 carats; mounted in 18k gold; length: 16 3/4in.*

US\$15,000 - 25,000

Accompanied by AGL report # CS 68449, dated June 18, 2015 stating the rubies are: Thai origin, indications of heat and minor to moderate clarity enhancement.



80



81



82

PROPERTY SOLD TO BENEFIT OPERA SANTA BARBARA

80

A DIAMOND BROOCH

designed as a stylized flowerhead centering a dome of round brilliant-cut diamonds, the frames set with similarly-cut baguette, marquise and round-shaped diamonds; *estimated total diamond weight: 12.70 carats; mounted in platinum; diameter: 2 1/4in.*

US\$6,000 - 8,000

Proceeds from the sale of this unique brooch will directly benefit Opera Santa Barbara. Now in its 22nd Season and performing at the historic Granada Theatre, Opera Santa Barbara's mission is to contribute to the cultural enrichment of its audiences by presenting exciting, high-quality opera productions and community engagement programs that celebrate the breadth and beauty of opera.

PROPERTY OF VARIOUS OWNERS

81

A PAIR OF RUBY AND DIAMOND EAR CLIPS, BOUCHERON

each designed as stylized leaves, centered by pear-shaped rubies and round brilliant-cut diamonds framed by tapered baguette-cut diamonds, to a textured gold leaf; *signed Boucheron Paris, no.36645; estimated total diamond weight: 5.10 carats; mounted in platinum and 18k gold; length: 1 1/2in.*

US\$15,000 - 20,000

82

A DIAMOND SOLITAIRE RING

centering an old European-cut diamond, weighing approximately 4.50 carats, flanked by square-cut diamond shoulders; *mounted in platinum; size 7 3/4*

US\$18,000 - 25,000



83

83
A RUBY, DIAMOND AND 18K GOLD BRACELET, FRENCH
of bombé form composed of polished gold spheres, enhanced with diagonal lines of round brilliant-cut diamonds and circular-cut rubies; with assay marks; estimated total diamond weight: 2.00 carats; length: 7 1/4in.

US\$30,000 - 50,000



84

84
A PAIR OF SAPPHIRE, RUBY, DIAMOND AND 18K GOLD "PELOUSE HAWAII" EAR CLIPS, VAN CLEEF & ARPELS
of bombé design, composed of polished gold spheres, accented with round brilliant-cut diamonds, circular-cut sapphires and circular-cut ruby flowerhead motifs; signed Van Cleef & Arpels, no.60804; length: 7/8in.

US\$15,000 - 20,000



85

85
A RUBY AND 18K GOLD “BUTTERCUP” WRISTWATCH, VAN CLEEF & ARPELS
 of quartz movement, the circular case framed within a gold floral surround, accented with circular-cut rubies, enclosing a gold dial with ruby numerals, continuing to a flexible gold bracelet of floral design, centering circular-cut rubies; *signed Van Cleef & Arpels, no.1854; length: 5 1/2in.*

US\$4,000 - 6,000



86

86
A DIAMOND, EMERALD, AND RUBY “DANSEUSE” BROOCH, VAN CLEEF & ARPELS, CIRCA 1944
 designed as a ballerina, with a pear-shaped rose-cut diamond face, her sleeves accented with two cushion-cut emeralds and skirt detailed with circular-cut emeralds and rubies; *signed Van Cleef & Arpels, no.7033; mounted in 18k gold; length: 2in.*

US\$50,000 - 70,000



88



87



89

87
AN ART MODERNE DIAMOND AND MIXED METAL CLIP, VAN CLEEF & ARPELS, FRENCH
 of geometric design, set with round brilliant-cut diamonds; *signed Van Cleef et Arpels, with French assay marks; mounted in platinum and gold; length: 1 3/4in.*

US\$5,000 - 7,000

88
A PERIDOT, ONYX AND ENAMEL "PANTHER" RING, CARTIER
 designed as a panther head, applied with black enamel spots, completed by an onyx nose and two pear-shaped peridot eyes; *signed Cartier, no. AJN561; accompanied by a signed box; mounted in 18k gold; size 6 1/2*

US\$15,000 - 18,000

89
A JADEITE JADE SADDLE RING
 with a curving carved oval 'saddle' using the most vivid green veins of the matrix, the ring beneath the longer saddle size showing a transparent icy white and pale green matrix; *mounted in an 18k gold inner shank; size 5 1/2*

US\$3,000 - 5,000

Accompanied by Mason-Kay report # 160303-2 dated March 3, 2016 stating the Jade is: Natural Jadeite Jade 'A' Jade, no dye or polymer detected.



90

90

A RETRO DIAMOND AND 14K GOLD SET, CIRCA 1940

comprising a pair of clip brooches and a bracelet, set with old European-cut diamonds; accompanied by two signed boxes; estimated total diamond weight: 9.00 carats; bracelet length: 9in.; clip length: 1 3/8in.

US\$5,000 - 7,500



91

91 AN 18K GOLD SERPENTINE WRISTWATCH, BVLGARI
the circular black metallic dial within bezel engraved BVLGARI, enclosing quartz movement, completed by a flexible wrap bracelet of bi-color tubogas links; signed *Bulgari*; gross weight approximately: 143.3 grams; length adjustable

US\$10,000 - 15,000



92

92 A DIAMOND "X" NECKLACE, TIFFANY & CO.
designed with an articulated series of cross-shaped links, interspersed with round brilliant-cut diamond accents; signed *T&Co.*; accompanied by a signed pouch; estimated total diamond weight: 5.10 carats; mounted in 18k gold; length: 16in.

US\$6,500 - 8,000



93



94



95

93^Y

**A MOTHER-OF-PEARL AND 18K GOLD
“PURE ALHAMBRA” SAUTOIR, VAN
CLEEF & ARPELS**

composed of fourteen mother-of-pearl quatrefoil motifs, each within a gold plated frame, to a fine link chain; *signed VCA, no.CL43358; length: 31 1/2in.*

US\$15,000 - 20,000

94^Y

**A MOTHER-OF-PEARL AND 18K GOLD
“PURE ALHAMBRA” NECKLACE, VAN
CLEEF & ARPELS**

composed of nine mother-of-pearl quatrefoil motifs, each within a gold plated frame, to a fine link chain; *signed VCA, no.CL40263; length: 16in.*

US\$8,000 - 12,000

95^Y

**A TOURMALINE, MOTHER-OF-PEARL
AND DIAMOND BROOCH, BULGARI**

designed as a four-ray star, centering a green tourmaline, weighing approximately 8.00 carats, set throughout with baguette and round brilliant-cut diamonds, alternating between mother-of-pearl panels; *signed Bvlgari; estimated total diamond weight: 6.00 carats; mounted in 18k gold; diameter: 2 3/8in.*

US\$8,000 - 12,000



(side view)



96

96

A SAPPHIRE, RUBY AND EMERALD DOME RING, CARTIER

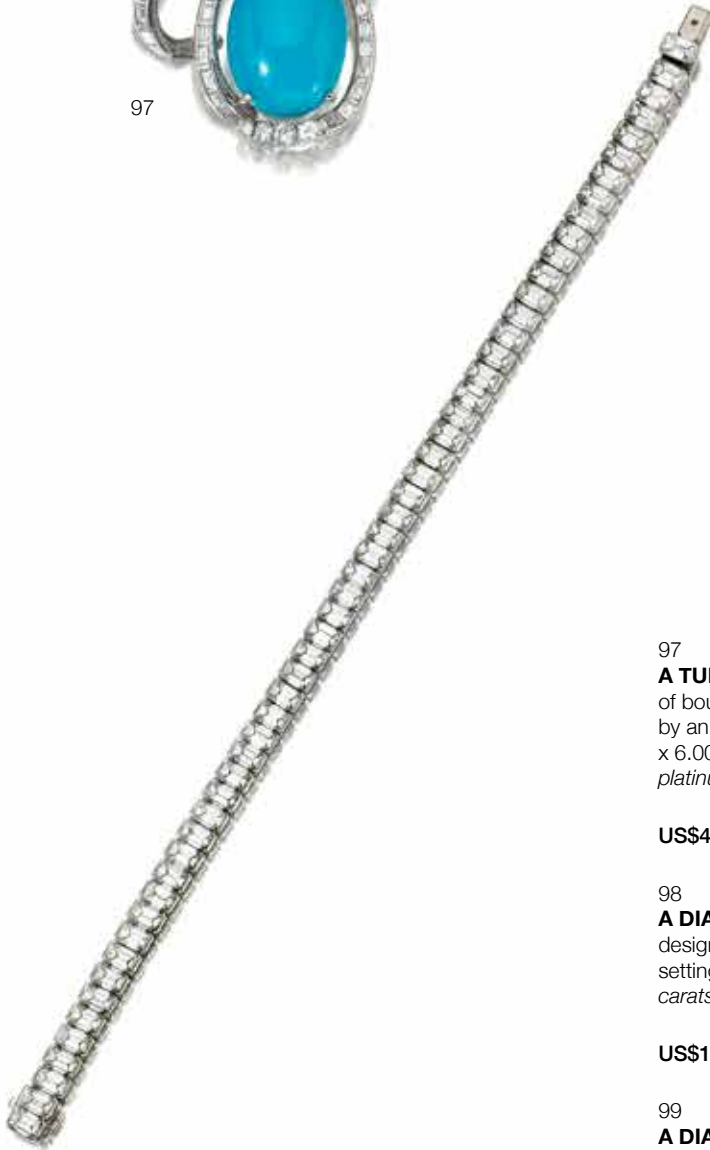
the high domed mount of openwork design, set to the top with a faceted ruby within a roped gold border, the dome beneath set throughout with multi-shaped emeralds, rubies and sapphires within a roped gold sectioned border; signed *Cartier Paris, no.72613*; mounted in 18k gold; size 4 1/2

US\$15,000 - 20,000





97



98



99

97

A TURQUOISE AND DIAMOND BROOCH

of bouquet and ribbon design, set with vari-cut diamonds, enhanced by an oval-shaped turquoise, measuring approximately 21.40 x 16.44 x 6.00mm; *estimated total diamond weight: 7.20 carats; mounted in platinum; length: 2 1/4in.*

US\$4,500 - 6,500

98

A DIAMOND BRACELET

designed as a line of emerald-cut diamonds, each in a half collet-setting, to a concealed clasp; *estimated total diamond weight: 18.60 carats; mounted in platinum and 18k white gold; length: 6 7/8in.*

US\$16,000 - 20,000

99

A DIAMOND, EMERALD AND ONYX "PANTHER" RING, CARTIER

designed as a pavé-set diamond panther with an articulated head and paws, set with pear-shaped emerald eyes and an onyx nose; *signed Cartier, no.24012A; estimated total diamond weight: 6.00 carats; mounted in platinum; size 6 1/4in.*

US\$35,000 - 45,000



100

A CAT'S EYE CHRYSOBERYL AND DIAMOND RING

set with an oval cat's eye chrysoberyl cabochon, weighing 10.40 carats, to a bombé surround pavé-set with round brilliant-cut diamonds; *estimated total diamond weight: 6.50 carats; mounted in platinum; size 6*

US\$50,000 - 70,000

Accompanied by GRS report # 2014-108352, dated October 7, 2014, stating the Cat's Eye Chrysoberyl as: no indication of treatments.

101

A PARAIBA TOURMALINE AND DIAMOND RING

centering an oval-cut Paraiba tourmaline, weighing 1.66 carats, enclosed within a heart-shaped and round brilliant-cut diamond border; *estimated total diamond weight: 1.20 carats; size 6*

US\$10,000 - 15,000

Accompanied by GIA report # 1213172794, dated November 16, 2015, stating the tourmaline as: Brazilian origin, indications of heat.

102

A DIAMOND SCARF NECKLACE

composed of fluid links of bezel-set round brilliant-cut diamonds, accented by briolette-cut diamond tassels; *estimated total diamond weight: 36.10 carats; mounted in platinum; length: 52 1/4in.*

US\$20,000 - 30,000



100

101



102

103



103

A PINK SAPPHIRE AND DIAMOND RING

centering an oval-shaped modified brilliant-cut pink sapphire, weighing 2.81 carats, enclosed within a heart and marquise-shaped diamond border; *estimated total diamond weight: 4.10 carats; mounted in 18k white gold; size 6*

US\$15,000 - 25,000

Accompanied by GRS report # 2014-018205, dated January 7, 2014 stating, the pink sapphire as: Madagascar origin, no indications of thermal treatment.

104



104

A DIAMOND RING

centering an emerald-cut diamond, weighing 3.39 carats, between tapered baguette-cut diamond shoulders; *estimated total diamond weight: 1.25 carats; mounted in platinum; size 6*

US\$15,000 - 20,000

Accompanied by GIA report # 1172512715, dated March 3, 2016, stating the diamond as: H color, VS2 clarity.

105



105

A PAIR OF ROCK CRYSTAL, AMETHYST AND DIAMOND BROOCHES

a polished rock crystal frame, accented with single-cut diamonds within a millegrain setting, centering a circular-cut amethyst, each weighing approximately 1.50 carats, with round brilliant-cut diamond and circular-cut amethyst pistils; *estimated total diamond weight: 1.90 carats; length: 1 1/2in.*

US\$4,000 - 6,000

106



PROPERTY OF A LADY

106

A SAPPHIRE AND DIAMOND RING

centering an oval mixed-cut sapphire, weighing 3.80 carats, within a round brilliant-cut diamond surround of floral design; *estimated total diamond weight: 1.60 carats; mounted in platinum; size 6*

US\$7,000 - 9,000

Accompanied by AGL report # CS 1073523, dated February 23, 2106, stating the sapphire as: Ceylon (Sri Lanka) origin, indications of heat.

PROPERTY OF VARIOUS OWNERS

107

A DIAMOND BROOCH

designed as an openwork scrolling ribbon motif, set with round brilliant and baguette-cut diamonds framing a round brilliant-cut diamond; *estimated total diamond weight: 10.15 carats; mounted in platinum; length: 2 1/2in.*

US\$6,000 - 8,000

108

A SAPPHIRE AND DIAMOND RING

centering an oval mixed-cut sapphire, weighing 24.47 carats, within a round brilliant-cut diamond surround; *estimated total diamond weight: 2.40 carats, mounted in platinum; size 6*

US\$25,000 - 35,000

Accompanied by GIA report # 5172276775, dated September 2, 2015, stating the sapphire as: Sri Lankan origin, no indications of heat.

107



108





109



110

109

A DIAMOND RING

centering a square modified brilliant-cut diamond, weighing 3.58 carats, enhanced by a pavé-set round brilliant-cut diamond gallery and shoulders; *estimated total diamond weight: 1.60 carats; mounted in platinum; size 3 1/2*

US\$38,000 - 45,000

Accompanied by GIA report # 13343537, dated January 27, 2016, stating the diamond as: G color, VVS2 clarity.

110

A PAIR OF TURQUOISE AND DIAMOND EAR CLIPS

centering a cluster of round brilliant-cut diamonds, enclosed within a marquise-shaped turquoise swirl border, enhanced with round brilliant-cut diamond accents; *estimated total diamond weight: 1.80 carats; mounted in 18k white gold; length: 1 3/8in.*

US\$4,000 - 6,000

111



112

111

**AN AQUAMARINE, PARAIBA TOURMALINE
AND DIAMOND RING**

centering an octagonal step-cut aquamarine, weighing approximately 35.50 carats, within a diamond and Paraiba tourmaline surround, to diamond split shank shoulders; *estimated total diamond weight: 1.40 carats; estimated total paraiba weight: 1.40 carats; mounted in platinum; size 7 3/4; one diamond deficient*

US\$20,000 - 30,000

Accompanied by a copy of GIA report # 5171289024, dated August 24, 2015, stating the Aquamarine as: blue color, color origin cannot currently be determined.

112

A DIAMOND BRACELET, CARTIER

designed as an articulated series of alternating hearts, set with round brilliant-cut diamonds, to a concealed clasp; *signed Cartier; accompanied by a signed box; estimated total diamond weight: 2.70 carats; mounted in 18k white gold; length: 7 1/8in.*

US\$7,500 - 9,000

113



114



113

AN OPAL, SAPPHIRE AND DIAMOND RING, CARVIN FRENCH

centering an oval opal cabochon, weighing approximately 9.50 carats, within a semi-circular sapphire surround, flanked by baguette-cut diamond shoulders; *with maker's mark; estimated total sapphire weight: 4.80 carats; estimated total diamond weight: 1.80 carats; mounted in platinum; size 7*

US\$25,000 - 35,000

114

A SAPPHIRE AND DIAMOND RING, CARVIN FRENCH

centering an oval mixed-cut sapphire, weighing 7.57 carats, flanked by tapered baguette shoulders; *with makers mark; estimated total diamond weight: 1.00 carat; mounted in platinum; size 5 3/4*

US\$35,000 - 55,000

Accompanied by AGL report # CS 64404, dated November 25, 2014, stating the sapphire as: Ceylon (Sri Lanka) origin, no indications of heat or clarity enhancement.





115

115
A PAIR OF COLORED DIAMOND AND DIAMOND EAR CLIPS, VAN CLEEF & ARPELS

each designed as a pavé-set diamond floral head, with a round brilliant-cut fancy colored diamond in the center, accented by round brilliant-cut fancy colored diamond leaves centered with square-cut diamonds; signed Van Cleef & Arpels NY17431; estimated total diamond weight: 8.90 carats; mounted in 18k gold; diameter: 1 3/8in.; (colored diamonds untested for origin of color)

US\$30,000 - 50,000



116

116
A DIAMOND AND COLORED DIAMOND RING, MOUNT BY VAN CLEEF & ARPELS

of crossover design, set with two round brilliant-cut diamonds, weighing 2.01 and 2.08 carats, within a pavé-set surround; mounting signed Van Cleef & Arpels, no.4696; mounted in platinum and 18k gold; size 4 (color diamonds untested for origin of color)

US\$35,000 - 45,000

Accompanied by GIA report # 2171459965, dated January 27, 2016, stating the 2.01 carats diamond as: G color, VS2 clarity.

Accompanied by GIA report # 517145998,2 dated January 27, 2016, stating the 2.08 carats diamond as: F color, VS1 clarity.



117

117
A FANCY COLORED DIAMOND BROOCH, CARVIN FRENCH

of wheat sheaf design, set with marquise-shaped and round brilliant-cut diamonds; with maker's mark; mounted in platinum and 18k gold; length: 2 1/2in.

US\$7,000 - 9,000

Accompanied by GIA report # 1176534052, dated March 15, 2016, stating the 0.18 carat diamond as: Fancy Deep Yellow-Orange color.

Accompanied by GIA report # 1176534058, dated March 15, 2016, stating the 0.24 carat diamond as: Fancy Deep Brownish Yellow color.

Accompanied by GIA report # 2175534063, dated March 15, 2016, stating the 0.24 carat diamond as: Fancy Deep Yellowish Orange color.



118

119

120

118

A PAIR OF FANCY COLORED DIAMOND AND DIAMOND EAR PENDANTS

each centering a fancy yellow oval-cut diamond, weighing 2.01 and 2.12 carats, within a round brilliant-cut diamond millegrain setting, suspending from a round brilliant-cut diamond; *estimated total diamond weight: 1.15 carats; mounted in 14k white gold; length: 1 1/8in.*

US\$12,000 - 18,000

Accompanied by GIA report # 2175510590, dated March 4, 2016, stating the 2.01 carats diamond as: Fancy Intense Yellow color, VS2 clarity.

Accompanied by GIA report # 6173510565, dated March 4, 2016, stating the 2.12 carats diamond as: Fancy Intense Yellow color, VVS2 clarity.

119

A DIAMOND NECKLACE

designed as a graduated line of round brilliant-cut diamonds, to the baguette and round brilliant-cut diamond line, suspending two articulated diamonds, within a diamond heart-shaped surround; *estimated total diamond weight: 20.70 carats; mounted in platinum; length: 15 7/8in.*

US\$8,000 - 12,000

120

A FANCY COLORED DIAMOND AND DIAMOND RING, CARVIN FRENCH

centering an emerald-cut fancy vivid yellow diamond, weighing 1.44 carats, within a crossover diagonal setting; *with maker's mark; mounted in platinum; size 4 1/4*

US\$15,000 - 25,000

Accompanied by GIA report # 14653714, dated October 28, 2005, stating the diamond as: Fancy Vivid Yellow color, VS2 clarity.



121

121

A RUBY AND DIAMOND FLOWER BROOCH

designed as a calibré-cut ruby flowerhead, centering circular-cut diamond pistils; *estimated total diamond weight: 1.60 carats; diameter: 2 1/4in.*

US\$8,000 - 12,000



122

122

A PAIR OF RUBY AND DIAMOND EAR CLIPS

each designed as a calibré-cut ruby flowerhead, centering circular-cut diamond pistils; *estimated total diamond weight: 1.55 carats; diameter: 1 1/8in.*

US\$8,000 - 10,000



123



124



125



126

123

A SAPPHIRE, RUBY AND DIAMOND “EN TREMBLANT” RING AND EARRING SET, CARTIER

the ring and earrings designed as bouquets, set en tremblant with brilliant-cut diamonds, rubies and sapphires; *signed Cartier, no.4781/1 and no.4781; estimated total diamond weight: 2.80 carats; mounted in 18k white gold; earring diameter: 1 1/4in.; ring size 7 1/4*

US\$30,000 - 50,000

124

A DIAMOND, SAPPHIRE AND EMERALD “PANTHER” RING, CARTIER

designed as a pavé-set diamond and sapphire panther with an articulated head and paws, set with pear-shaped emerald eyes and onyx nose; *signed Cartier; no. B67365; accompanied by a signed box; estimated total diamond weight: 5.40 carats; mounted in platinum; size 6 1/8*

US\$60,000 - 80,000

125

A RUBY AND DIAMOND RING

centering a cushion-cut ruby, weighing 2.06 carats, enhanced by pavé-set diamond shoulders; *mounted in platinum; size 5 1/2*

US\$30,000 - 50,000

Accompanied by AGL report # CS 60277, dated April 14, 2014 stating, the ruby as: Burma (Myanmar) origin, no indications of heat or clarity enhancement.

126

A DIAMOND SOLITAIRE RING, TIFFANY & CO.

set with an oval brilliant-cut diamond, weighing 1.47 carats; *signed Tiffany & Co., no.25091531; mounted in platinum; size 5 3/4*

US\$7,500 - 8,500

Accompanied by GIA report # 1172492797, dated February 22, 2016, stating the diamond as: D color, VVS2 clarity.

127



128



129



130



127

A SAPPHIRE AND DIAMOND RING, CARVIN FRENCH

centering a cushion mixed-cut sapphire, weighing 10.29 carats, within a diamond split shank setting; *signed with maker's mark; mounted in platinum; size 6 3/4*

US\$15,000 - 25,000

Accompanied by AGL report # CS 54568, dated May 16, 2013 stating the sapphire has: no indications of heat or clarity enhancement.

128

A RUBY AND DIAMOND CROSSOVER RING

set with a cushion-cut diamond and oval-cut ruby, between crossover shoulders set with baguette-cut diamond accents, to a plain shank; *cushion-cut diamond estimated weight: 1.90 carats; estimated ruby weight: 1.40 carats; mounted in platinum; size 6 3/4*

US\$7,500 - 9,500

129

A SAPPHIRE AND DIAMOND RING, CARVIN FRENCH

centering an antique cushion mixed-cut sapphire, weighing 4.07 carats, between triangular-cut diamond shoulders; *with maker's mark; mounted in platinum; size 5 3/4*

US\$35,000 - 55,000

Accompanied by AGL report # CS 1074201, dated March 15, 2016, stating the sapphire as: Burma (Myanmar) origin, no indications of heat or clarity enhancement.

Accompanied by AGL report # CS 32874-1, dated May 3, 1999, stating the sapphire as: Burma (Myanmar) origin, no indications of heat or clarity enhancement.

130

A DIAMOND AND SAPPHIRE BROOCH, OSCAR HEYMAN & BROTHERS

designed as a flower set with oval-cut sapphires and round brilliant-cut, pear and marquise-shaped diamonds, to a baguette-cut diamond stem; *signed with makers mark; estimated total diamond weight: 5.30 carats; mounted in platinum; length: 1 1/2in.*

US\$8,000 - 10,000



131



132



133



131

A SAPPHIRE AND DIAMOND RING

centering an oval modified mixed-cut sapphire, measuring approximately 15.36 x 10.93 x 7.88mm, flanked by old European-cut diamonds within a millegrain setting; *mounted in platinum; size 5 3/4*

US\$20,000 - 30,000

Accompanied by AGL report # CS 1073346, dated February 12, 2016, stating the sapphire as: Ceylon (Sri Lanka) origin, no indications of heat or clarity enhancement.

132

A JADEITE JADE AND DIAMOND PENDANT NECKLACE WITH CHAIN, CARVIN FRENCH

set with four finely translucent oval-shaped jadeite jade cabochons, enhanced with articulated bullet-shaped diamonds; *with maker's mark; estimated total diamond weight: 4.00 carats; estimated total jade weight: 19.00 carats; mounted in 18k white gold; length (including chain): 16 1/2in.*

US\$20,000 - 30,000

Accompanied by Mason-Kay report # 160303-3, dated March 3, 2016 stating, the 13.85 x 10.25 x 3.84mm Jade as: Natural Jadeite Jade 'A' Jade, no dye or polymer detected.

133

AN EMERALD AND DIAMOND RING, HARRY WINSTON

centering an emerald-cut emerald, weighing 2.70 carats, accented by a baguette and marquise-shaped diamond surround; *signed Winston; estimated total diamond weight: 3.20 carats; mounted in platinum; size 4 3/4*

US\$15,000 - 20,000

Accompanied by AGL report # CS 65488, dated January 9, 2015 stating the emerald is: Colombian origin, standard insignificant traditional clarity enhancement.



134

134

A DIAMOND NECKLACE

designed as a flexible tapered line of baguette-cut diamonds, between two lines of round brilliant-cut diamonds; *estimated total diamond weight: 44.00 carats; mounted in platinum; length: 15 3/4in.*

US\$38,000 - 45,000



135

135

A SAPPHIRE AND DIAMOND RING

centering a cushion-shaped sapphire, measuring approximately 10.47 x 7.92 x 4.43mm, within an undulating surround of tapered baguette-cut diamonds; *estimated total diamond weight: 1.80 carats; mounted in platinum; size 6 3/4*

US\$15,000 - 20,000

Accompanied by AGL report # CS 1073287, dated February 23, 2016, stating the sapphire as: Ceylon (Sri Lanka) origin, no indications of heat or clarity enhancement.





136

136

**AN IMPORTANT BELLE ÉPOQUE SAPPHIRE
AND DIAMOND RING, TIFFANY & CO. CIRCA 1910**

centering an oval mixed-cut sapphire, weighing 10.94 carats, within a pavé-set diamond surround and ornate openwork diamond-set mount; signed *Tiffany & Co.*; mounted in platinum; size 8 3/4

US\$100,000 - 150,000

Accompanied by AGL report # CS 1073139, dated January 29, 2016, stating the sapphire as: Burma (Myanmar) origin, no indications of heat or clarity enhancement.

This elegant Belle Époque sapphire and diamond ring reflects the amalgamation of beauty, quality and design, for which Tiffany & Company was renowned, at the turn of the century. Inspired by the French late 18th century jewelry designs, Tiffany offered their clients creations of platinum and diamonds offset with colored gemstones of the finest quality. It was Tiffany's gemologist, George Kunz, in the early 1900's who, amongst many of his noteworthy and important contributions, was instrumental for procuring some of the most beautiful and rare gemstones available in the world.

This Burmese sapphire exhibits superb liveliness and rich color, combined with exceptional clarity, exemplifying all of the desirable qualities that define an important stone.



137

137

A PAIR OF EMERALD AND DIAMOND EAR PENDANTS, RUSER

each suspending a pear-shaped emerald, weighing 6.26 and 5.96 carats, within a round brilliant-cut diamond surround, to the round brilliant and marquise-cut diamond cluster surmount, pendant drops detachable; signed *Ruser*; estimated total diamond weight: 12.80 carats; mounted in platinum; length 2 1/8in.

US\$40,000 - 60,000

Accompanied by AGL report # CS 1073225 A and B, dated February 3, 2016, stating the emeralds as: Colombian origin, insignificant (traditional) clarity enhancement.







138

138

A SAPPHIRE AND DIAMOND RING

set with a cushion mixed-cut sapphire, weighing 8.07 carats, flanked by fancy-cut diamond shoulders; *estimated total diamond weight: 1.00 carat; mounted in platinum; size 7 3/4in.*

US\$400,000 - 600,000

Accompanied by AGL report # CS 1073201, dated February 3, 2016, stating the sapphire as: Kashmir origin, no indications of heat or clarity enhancement.

Bernard Golson (1879-1983) lived a lengthy and adventurous life. Born in Paris, his career spanned working with the French government in Egypt involving the Suez Canal, then years in Colorado and Mexico with various gold and silver mining companies, including his own. Over the years he met and worked with the Guggenheims and aided Pershing and the US authorities in the pursuit of Pancho Villa.

In 1906 he traveled to Vienna where he met and married his wife Malvina. They lived in Mexico for years, only to be chased from the country by Pancho Villa. They escaped via stagecoach with a new baby, and her jewels sewn into her clothes. All other belongings were lost. They escaped to the US, where they lived a graceful and comfortable life.

Much of Bernard's mining companies records can be found at the Bancroft Library at the University of California at Berkeley.

It is believed Bernard purchased the sapphire ring for Malvina in the early 1920s.

END OF SALE

COLORLESS DIAMONDS INDEX

Lot No.	Carat/Dimensions	Cut	Color	Clarity	Certificate
3	3.24	Old-European-cut	L-M	SI1	
4	5.22	Cushion-cut	K-L	VS	
6	1.65*	Old-European-cut	H-J	SI-I	
	1.45*	Old-European-cut	H-J	SI-I	
	1.65*	Old-European-cut	H-J	SI-I	
	1.25*	Old-European-cut	H-J	SI-I	
18	2.29	Round brilliant-cut	F	VS1	GIA
33	2.00*	Old-European-cut	G-H	VS-SI	
	1.15	Pear-shape	Fancy Vivid Yellow	VS1	GIA
	1.07	Pear-shape	Fancy Intense Yellow	VVS2	GIA
44	1.69	Round brilliant-cut	E	VS1	GIA
50	4.24	Oval-cut	Fancy Yellow	VS2	GIA
51	4.79	Pear-shape	F & G	VVS2	HRD & GIA
54	1.43	Round brilliant-cut	D	VVS2	GIA
63	2.90*	Old-European-cut	M+	SI2-I1 (small chips on girdle)	
78	1.59	Round brilliant-cut	F	VS2	GIA
	1.53	Round brilliant-cut	F	VS2	GIA
82	4.50*	Old-European-cut	H-I	SI	
104	3.39	Step-cut	H	VS2	GIA
109	3.58	Square-brilliant	G	VVS2	GIA
116	2.01	Round brilliant-cut	G	VS2	GIA
	2.08	Round brilliant-cut	F	VS1	GIA
118	2.01	Oval-cut	Fancy Intense Yellow	VS2	GIA
	2.12	Oval-cut	Fancy Intense Yellow	VVS2	GIA
120	1.44	Step-cut	Fancy Vivid Yellow	VS2	GIA
126	1.47	Oval-cut	D	VVS2	GIA
128	1.90	Cushion-cut	I-J	SI	

*next to color - not tested for origin of color

* next to piece - other significant stones within the piece

* next to weight - approximate weight

* next to cert - lab graded color only

* next to lot number - Bonhams specialists disagree with the grade. Please see a specialist for details.

This list is provided for your convenience based on the opinion of our gemologists.

It in no way represents a guarantee or warranty.

Bonhams is not responsible for any discrepancies between this information and other opinions.

CERTIFIED RUBY INDEX

Lot No.	Carat/Dimensions	Cut	Origin	Treatment	Laboratory Report
41	1.58 carats	Oval-cut	Burmese	Heat and Minor Clarity	AGL
73	10.17 x 7.15 x 4.65 mm	Oval-cut	Burmese	Heat and Insignificant Clarity	AGL
79	9.60 total carat weight	Oval-cut	Thai	Heat & Minor/Moderate Clarity	AGL
125	2.06 carats	Cushion-cut	Burmese	None	AGL

CERTIFIED SAPPHIRE INDEX

Lot No.	Carat/Dimensions	Cut	Origin	Treatment	Laboratory Report
16	13.0 x 10.08 x 6.80mm	Cushion-cut	Ceylon	None	AGL
23	5.40 carats	Cabochon	Burmese	None	AGL
25	14.89 x 11.50 x 4.6 mm	Oval-cut	Ceylon	None	AGL
32	3.49 carats	Cushion-cut	Kashmir	None	AGL, Gubelin, SSEF
34	7.90 x 6.70 x 5.00mm	Cushion-cut	Kashmir	None	AGL
37	16.12 carats	Cabochon	Ceylon	None	AGL
71	16.83 carats	Oval-cut	Burmese	None	GRS
103	2.81 carats (pink sapphire)	Oval-cut		None	GRS
106	3.80 carats	Oval-cut	Ceylon	Heat Treated	AGL
108	24.47 carats	Oval-cut	Sri Lanka	None	GIA
114	7.57 carats	Oval-cut	Ceylon	None	AGL
127	10.29 carats	Cushion-cut		None	AGL
129	4.07 carats	Cushion-cut	Burmese	None	AGL
131	15.36 x 10.93 x 7.88 mm	Oval-cut	Ceylon	None	AGL
135	10.47 x 7.92 x 4.43 mm	Cushion-cut	Ceylon	None	AGL
136	10.94 carats	Oval-cut	Burmese	None	AGL
138	8.07 carats	Cushion-cut	Kashmir	None	AGL

CERTIFIED EMERALD INDEX

Lot No.	Carat/Dimensions	Cut	Origin	Treatment	Laboratory Report
27	5.01 carats	Step-cut	Columbia	Insignificant Clarity	C. Dunaigre
31	18.84	Step-cut	Columbia	None	AGL
66	4.37 carats	Step-cut	Columbia	Insignificant Clarity	AGL
133	2.70 carats	Step-cut	Columbia	Insignificant Clarity	AGL
137	6.26 carats	Pear-shape	Columbia	Insignificant Clarity	AGL
	5.96 carats	Pear-shape	Columbia	Insignificant Clarity	AGL

CERTIFIED JADE INDEX

Lot No.	Carat/Dimensions	Cut	Origin	Treatment	Laboratory Report
53	11.20 x 8.80 x 4.30mm	Cabochon	Type A	None	Hong Kong Jade & Stone Lab
56	10.25 x 13.75 x 4.95mm	Oval-cut	Type A	None	Mason Kay
132	19.00 total weight	Cabochon	Type A	None	Mason Kay

CERTIFIED TOURMALINE INDEX

Lot No.	Carat/Dimensions	Cut	Origin	Treatment	Laboratory Report
101	1.66 carats	Oval-cut	Brazil	Heat Treated	GIA

CERTIFIED CHRYSOBERYL INDEX

Lot No.	Carat/Dimensions	Cut	Origin	Treatment	Laboratory Report
100	10.40 carats	Oval-cut	cat's eye	None	GRS

CERTIFIED PEARL INDEX

Lot No.	Carat/Dimensions	Cut	Origin	Treatment	Laboratory Report
10	2, natural	drop	8.34 & 8.40x8.26mm	white	GIA

RARE JEWELS & JADEITE

Wednesday 1 June 2016, 3pm
Bonhams Hong Kong Gallery
Suite 2001, One Pacific Place
Admiralty, Hong Kong

**AN IMPORTANT DIAMOND NECKLACE
BY BULGARI, CIRCA 1950**
HK\$2,500,000 – 3,500,000
US\$320,000 – 450,000

ENQUIRIES
+852 2918 4321
jewellery.hk@bonhams.com



Bonhams

HONG KONG

bonhams.com/hongkong

FINE JEWELLERY

Wednesday 20 April
New Bond Street, London

**A MAGNIFICENT DIAMOND SINGLE-
STONE RING, BY HARRY WINSTON**
£700,000-900,000
US\$1,000,000-1,300,000

ENQUIRIES
+44 (0) 20 7468 8284
emily.barber@bonhams.com



Bonhams

LONDON

[bonhams.com/jewellery](https://www.bonhams.com/jewellery)

CONDITIONS OF SALE

The following Conditions of Sale, as amended by any published or posted notices or verbal announcements during the sale, constitute the entire terms and conditions on which property listed in the catalog shall be offered for sale or sold by Bonhams & Butterfields Auctioneers Corp. and any consignor of such property for whom we act as agent. If live online bidding is available for the subject auction, additional terms and conditions of sale relating to online bidding will apply; see www.bonhams.com/WebTerms for the supplemental terms. As used herein, "Bonhams," "we" and "us" refer to Bonhams & Butterfields Auctioneers Corp.

1. As used herein, the term "bid price" means the price at which a lot is successfully knocked down to the purchaser. The term "purchase price" means the aggregate of (a) the bid price, (b) a PREMIUM retained by us and payable by the purchaser EQUAL TO 25% OF THE FIRST \$100,000 OF THE BID PRICE, 20% OF THE AMOUNT OF THE BID PRICE ABOVE \$100,000 UP TO AND INCLUDING \$2,000,000, AND 12% OF THE AMOUNT OF THE BID PRICE OVER \$2,000,000, and (c) unless the purchaser is exempt by law from the payment thereof, any California, Arizona, Colorado, Connecticut, Florida, Georgia, Illinois, Massachusetts, Nevada, New York, Pennsylvania, Texas, Washington, D.C., Washington state, or other state or local sales tax (or compensating use tax) and other applicable taxes.

2. On the fall of the auctioneer's hammer, the highest bidder shall have purchased the offered lot in accordance and subject to compliance with all of the conditions set forth herein and (a) assumes full risk and responsibility therefor, (b) if requested will sign a confirmation of purchase, and (c) will pay the purchase price in full or such part as we may require for all lots purchased. No lot may be transferred. Any person placing a bid as agent on behalf of another (whether or not such person has disclosed that fact or the identity of the principal) may be jointly and severally liable with the principal under any contract resulting from the acceptance of a bid.

Unless otherwise agreed, payment in good funds is due and payable within five (5) business days following the auction sale. Whenever the purchaser pays only a part of the total purchase price for one or more lots purchased, we may apply such payments, in our sole discretion, to the lot or lots we choose. Payment will not be deemed made in full until we have collected good funds for all amounts due.

Payment for purchases may be made in or by (a) cash, (b) cashier's check or money order, (c) personal check with approved credit drawn on a U.S. bank, (d) wire transfer or other immediate bank transfer, or (e) Visa, MasterCard, American Express or Discover credit, charge or debit card. A processing fee will be assessed on any returned checks. Please note that the amount of cash notes and cash equivalents that can be accepted from a given purchaser may be limited.

The purchaser grants us a security interest in the property, and we may retain as collateral security for the purchaser's obligations to us, any property and all monies held or received by us for the account of the purchaser, in our possession. We retain all rights of a secured party under the California Commercial Code. If the foregoing conditions or any other applicable conditions herein are not complied with, in addition to other remedies available to us and the consignor by law, including without limitation, the right to hold the purchaser liable for the purchase price, we at our option may either (a) cancel the sale, retaining as liquidated damages all payments made by the purchaser or (b) resell the property, either publicly or privately, and in such event the purchaser shall be liable for

the payment of any deficiency plus all costs and expenses of both sales, our commission at our standard rates, all other charges due hereunder, attorneys' fees, expenses and incidental damages. In addition, where two or more amounts are owed in respect of different transactions by the purchaser to us, to Bonhams 1793 Limited and/or to any of our other affiliates, subsidiaries or parent companies worldwide within the Bonhams Group, we reserve the right to apply any monies paid in respect of a transaction to discharge any amount owed by the purchaser. If all fees, commissions, premiums, bid price and other sums due to us from the purchaser are not paid promptly as provided in these Conditions of Sale, we reserve the right to impose a finance charge equal to 1.5% per month on all amounts due to us beginning on the 31st day following the sale until payment is received, in addition to other remedies available to us by law.

3. We reserve the right to withdraw any property and to divide and combine lots at any time before such property's auction. Unless otherwise announced by the auctioneer at the time of sale, all bids are per lot as numbered in the catalog and no lots shall be divided or combined for sale.

4. We reserve the right to reject a bid from any bidder, to split any bidding increment, and to advance the bidding in any manner the auctioneer may decide. In the event of any dispute between bidders, or in the event the auctioneer doubts the validity of any bid, the auctioneer shall have sole and final discretion either to determine the successful bidder or to re-offer and resell the article in dispute. If any dispute arises after the sale, our sales records shall be conclusive in all respects.

5. If we are prevented by fire, theft or any other reason whatsoever from delivering any property to the purchaser or a sale otherwise cannot be completed, our liability shall be limited to the sum actually paid therefor by the purchaser and shall in no event include any compensatory, incidental or consequential damages.

6. If a lot is offered subject to a reserve, we may implement such reserve by bidding on behalf of the consignor, whether by opening bidding or continuing bidding in response to other bidders until reaching the reserve. If we have an interest in an offered lot and the proceeds therefrom other than our commissions, we may bid therefor to protect such interest. **CONSIGNORS ARE NOT ALLOWED TO BID ON THEIR OWN ITEMS.**

7. All statements contained in the catalog or in any bill of sale, condition report, invoice or elsewhere as to authorship, period, culture, source, origin, measurement, quality, rarity, provenance, importance, exhibition and literature of historical relevance, or physical condition **ARE QUALIFIED STATEMENTS OF OPINION AND NOT REPRESENTATIONS OR WARRANTIES.** No employee or agent of Bonhams is authorized to make on our behalf or on that of the consignor any representation or warranty, oral or written, with respect to any property.

8. All purchased property shall be removed from the premises at which the sale is conducted by the date(s) and time(s) set forth in the "Buyer's Guide" portion of the catalog. If not so removed, daily storage fees will be payable to us by the purchaser as set forth therein. We reserve the right to transfer property not so removed to an offsite warehouse at the purchaser's risk and expense, as set forth in more detail in the "Buyer's Guide." Accounts must be settled in full before property will be released. Packing and handling of purchased lots are the responsibility of the purchaser. Bonhams can provide packing and shipping services for certain items as noted in the "Buyer's Guide" section of the catalog.

9. The copyright in the text of the catalog and the photographs, digital images and illustrations of lots in the catalog belong to Bonhams or its licensors. You will not reproduce or permit anyone else to reproduce such text, photographs, digital images or illustrations without our prior written consent.

10. These Conditions of Sale shall bind the successors and assigns of all bidders and purchasers and inure to the benefit of our successors and assigns. No waiver, amendment or modification of the terms hereof (other than posted notices or oral announcements during the sale) shall bind us unless specifically stated in writing and signed by us. If any part of these Conditions of Sale is for any reason invalid or unenforceable, the rest shall remain valid and enforceable.

11. These Conditions of Sale and the purchaser's and our respective rights and obligations hereunder are governed by the laws of the State of California. By bidding at an auction, each purchaser and bidder agrees to be bound by these Conditions of Sale. Any dispute, controversy or claim arising out of or relating to this agreement, or the breach, termination or validity thereof, brought by or against Bonhams (but not including claims brought against the consignor by the purchaser of lots consigned hereunder) shall be resolved by the procedures set forth below.

MEDIATION AND ARBITRATION PROCEDURES

(a) Within 30 days of written notice that there is a dispute, the parties or their authorized and empowered representatives shall meet by telephone and/or in person to mediate their differences. If the parties agree, a mutually acceptable mediator shall be selected and the parties will equally share such mediator's fees. The mediator shall be a retired judge or an attorney familiar with commercial law and trained in or qualified by experience in handling mediations. Any communications made during the mediation process shall not be admissible in any subsequent arbitration, mediation or judicial proceeding. All proceedings and any resolutions thereof shall be confidential, and the terms governing arbitration set forth in paragraph (c) below shall govern.

(b) If mediation does not resolve all disputes between the parties, or in any event no longer than 60 days after receipt of the written notice of dispute referred to above, the parties shall submit the dispute for binding arbitration before a single neutral arbitrator. Such arbitrator shall be a retired judge or an attorney familiar with commercial law and trained in or qualified by experience in handling arbitrations. Such arbitrator shall make all appropriate disclosures required by law. The arbitrator shall be drawn from a panel of a national arbitration service agreed to by the parties, and shall be selected as follows: (i) If the national arbitration service has specific rules or procedures, those rules or procedures shall be followed; (ii) If the national arbitration service does not have rules or procedures for the selection of an arbitrator, the arbitrator shall be an individual jointly agreed to by the parties. If the parties cannot agree on a national arbitration service, the arbitration shall be conducted by the American Arbitration Association, and the arbitrator shall be selected in accordance with the Rules of the American Arbitration Association. The arbitrator's award shall be in writing and shall set forth findings of fact and legal conclusions.

(c) Unless otherwise agreed to by the parties or provided by the published rules of the national arbitration service:

(i) the arbitration shall occur within 60 days following the selection of the arbitrator;

(ii) the arbitration shall be conducted in the designated location, as follows: (A) in any case in which the subject auction by Bonhams took place or was scheduled to take place in the State of New York or Connecticut or the Commonwealth of Massachusetts, the arbitration shall take place in New York City, New York; (B) in all other cases, the arbitration shall take place in the city of San Francisco, California; and

(iii) discovery and the procedure for the arbitration shall be as follows:

- (A) All arbitration proceedings shall be confidential;
- (B) The parties shall submit written briefs to the arbitrator no later than 15 days before the arbitration commences;
- (C) Discovery, if any, shall be limited as follows: (I) Requests for no more than 10 categories of documents, to be provided to the requesting party within 14 days of written request therefor; (II) No more than two (2) depositions per party, provided however, the deposition(s) are to be completed within one (1) day; (III) Compliance with the above shall be enforced by the arbitrator in accordance with California law;
- (D) Each party shall have no longer than eight (8) hours to present its position. The entire hearing before the arbitrator shall not take longer than three (3) consecutive days;
- (E) The award shall be made in writing no more than 30 days following the end of the proceeding. Judgment upon the award rendered by the arbitrator may be entered by any court having jurisdiction thereof.

To the fullest extent permitted by law, and except as required by applicable arbitration rules, each party shall bear its own attorneys' fees and costs in connection with the proceedings and shall share equally the fees and expenses of the arbitrator.

LIMITED RIGHT OF RESCISSION

If within one (1) year from the date of sale, the original purchaser (a) gives written notice to us alleging that the identification of Authorship (as defined below) of such lot as set forth in the **BOLD TYPE** heading of the catalog description of such lot (as amended by any saleroom notices or verbal announcements during the sale) is not substantially correct based on a fair reading of the catalog (including the terms of any glossary contained therein), and (b) within 10 days after such notice returns the lot to us in the same condition as at the time of sale, and (c) establishes the allegation in the notice to our satisfaction (including by providing one or more written opinions by recognized experts in the field, as we may reasonably require), then the sale of such lot will be rescinded and, unless we have already paid to the consignor monies owed him in connection with the sale, the original purchase price will be refunded.

If, prior to receiving such notice from the original purchaser alleging such defect, we have paid the consignor monies owed him in connection with the sale, we shall pay the original purchaser the amount of our commissions, any other sale proceeds to which we are entitled and applicable taxes received from the purchaser on the sale and make demand on the consignor to pay the balance of the original purchase price to the original purchaser. Should the consignor fail to pay such amount promptly, we may disclose the identity of the consignor and assign to the original purchaser our rights against the consignor with respect to the lot the sale of which is sought to be rescinded. Upon such disclosure and assignment, any liability of Bonhams as consignor's agent with respect to said lot shall automatically terminate.

The foregoing limited right of rescission is available to the original purchaser only and may not be assigned to or relied upon by any subsequent transferee of the property sold. The purchaser hereby accepts the benefit of the consignor's warranty of title and other representations and warranties made by the consignor for the purchaser's benefit. Nothing in this section shall be construed as an admission by us of any representation of fact, express or implied, obligation or responsibility with respect to any lot. **THE PURCHASER'S SOLE AND EXCLUSIVE REMEDY AGAINST BONHAMS FOR ANY**

REASON WHATSOEVER IS THE LIMITED RIGHT OF RESCISSION DESCRIBED IN THIS SECTION.

"Authorship" means only the identity of the creator, the period, culture and source or origin of the lot, as the case may be, as set forth in the **BOLD TYPE** heading of the print catalog entry. The right of rescission does not extend to: (a) works of art executed before 1870 (unless these works are determined to be counterfeits created since 1870), as this is a matter of current scholarly opinion which can change; (b) titles, descriptions, or other identification of offered lots, which information normally appears in lower case type below the **BOLD TYPE** heading identifying the Authorship; (c) Authorship of any lot where it was specifically mentioned that there exists a conflict of specialist or scholarly opinion regarding the Authorship of the lot at the time of sale; (d) Authorship of any lot which as of the date of sale was in accordance with the then generally-accepted opinion of scholars and specialists regarding the same; or (e) the identification of periods or dates of creation in catalog descriptions which may be proven inaccurate by means of scientific processes that are not generally accepted for use until after publication of the catalog in which the property is offered or that were unreasonably expensive or impractical to use at the time of such publication.

LIMITATION OF LIABILITY

EXCEPT AS EXPRESSLY PROVIDED ABOVE, ALL PROPERTY IS SOLD "AS IS." NEITHER BONHAMS NOR THE CONSIGNOR MAKES ANY REPRESENTATION OR WARRANTY, EXPRESS OR IMPLIED, AS TO THE MERCHANTABILITY, FITNESS OR CONDITION OF THE PROPERTY OR AS TO THE CORRECTNESS OF DESCRIPTION, GENUINENESS, ATTRIBUTION, PROVENANCE OR PERIOD OF THE PROPERTY OR AS TO WHETHER THE PURCHASER ACQUIRES ANY COPYRIGHTS OR OTHER INTELLECTUAL PROPERTY RIGHTS IN LOTS SOLD OR AS TO WHETHER A WORK OF ART IS SUBJECT TO THE ARTIST'S MORAL RIGHTS OR OTHER RESIDUAL RIGHTS OF THE ARTIST. THE PURCHASER EXPRESSLY ACKNOWLEDGES AND AGREES THAT IN NO EVENT SHALL BONHAMS BE LIABLE FOR ANY DAMAGES INCLUDING, WITHOUT LIMITATION, ANY COMPENSATORY, INCIDENTAL OR CONSEQUENTIAL DAMAGES.

SELLER'S GUIDE

SELLING AT AUCTION

Bonhams can help you every step of the way when you are ready to sell art, antiques and collectible items at auction. Our regional offices and representatives throughout the US are available to service all of your needs. Should you have any further questions, please visit our website at www.bonhams.com/us for more information or call our Client Services Department at +1 (800) 223 2854 ext. 23550.

AUCTION ESTIMATES

The first step in the auction process is to determine the auction value of your property. Bonhams' world-renowned specialists will evaluate your special items at no charge and in complete confidence. You can obtain an auction estimate in many ways:

- Attend one of our Auction Appraisal Events held regularly at our galleries and in other major metropolitan areas. The updated schedule for Bonhams Auction Appraisal Events is available at www.bonhams.com/us.
- Call our Client Services Department to schedule a private appointment at one of our galleries. If you have a large collection, our specialists can travel, by appointment, to evaluate your property on site.
- Send clear photographs to us of each individual item, including item dimensions and other pertinent information with each picture. Photos should be sent to Bonhams' address in envelopes marked

as "photo auction estimate". Alternatively, you can submit your request using our online form at www.bonhams.com/us. Digital images may be attached to the form. Please limit your images to no more than five (5) per item.

CONSIGNING YOUR PROPERTY

After you receive an estimate, you may consign your property to us for sale in the next appropriate auction. Our staff assists you throughout the process, arranging transportation of your items to our galleries (at the consignor's expense), providing a detailed inventory of your consignment, and reporting the prices realized for each lot. We provide secure storage for your property in our warehouses and all items are insured throughout the auction process. You will receive payment for your property approximately 35 days after completion of sale.

Sales commissions vary with the potential auction value of the property and the particular auction in which the property is offered. Please call us for commission rates.

PROFESSIONAL APPRAISAL SERVICES

Bonhams' specialists conduct insurance and fair market value appraisals for private collectors, corporations, museums, fiduciaries and government entities on a daily basis. Insurance appraisals, used for insurance purposes, reflect the cost of replacing property in today's retail market. Fair market value appraisals are used for estate,

tax and family division purposes and reflect prices paid by a willing buyer to a willing seller.

When we conduct a private appraisal, our specialists will prepare a thorough inventory listing of all your appraised property by category. Valuations, complete descriptions and locations of items are included in the documentation.

Appraisal fees vary according to the nature of the collection, the amount of work involved, the travel distance, and whether the property is subsequently consigned for auction.

Our appraisers are available to help you anywhere and at any time. Please call our Client Services Department to schedule an appraisal.

ESTATE SERVICES

Since 1865, Bonhams has been serving the needs of fiduciaries – lawyers, trust officers, accountants and executors – in the disposition of large and small estates. Our services are specially designed to aid in the efficient appraisal and disposition of fine art, antiques, jewelry, and collectibles. We offer a full range of estate services, ranging from flexible financial terms to tailored accounting for heirs and their agents to world-class marketing and sales support.

For more information or to obtain a detailed Trust and Estates package, please visit our website at www.bonhams.com/us or contact our Client Services Department.

BUYER'S GUIDE

BIDDING & BUYING AT AUCTION

Whether you are an experienced bidder or an enthusiastic novice, auctions provide a stimulating atmosphere unlike any other. Bonhams previews and sales are free and open to the public. As you will find in these directions, bidding and buying at auction is easy and exciting. Should you have any further questions, please visit our website at www.bonhams.com or call our Client Services Department at +1 (800) 223 2854 ext. 3550.

Catalogs

Before each auction we publish illustrated catalogs. Our catalogs provide descriptions and estimated values for each "lot." A lot may refer to a single item or to a group of items auctioned together. The catalogs also include the dates and the times for the previews and auctions. We offer our catalogs by subscription or by single copy. For information on subscribing to our catalogs, you may refer to the subscription form in this catalog, call our Client Services Department, or visit our website at www.bonhams.com/us.

Previews

Auction previews are your chance to inspect each lot prior to the auction. We encourage you to look closely and examine each object on which you may want to bid so that you will know as much as possible about it. Except as expressly set forth in the Conditions of Sale, items are sold "as is" and with all faults; illustrations in our catalogs, website and other materials are provided for identification only. At the previews, our staff is always available to answer your questions and guide you through the auction process. Condition reports may be available upon request.

Estimates

Bonhams catalogs include low and high value estimates for each lot, exclusive of the buyer's premium and tax. The estimates are provided as an approximate guide to current market value based primarily on previous auction results for comparable pieces, and should not be interpreted as a representation or prediction of actual selling prices. They are determined well in advance of a sale and are subject to revision. Please contact us should you have any questions about value estimates.

Reserves

Unless indicated by the ρ symbol next to the lot number, which denotes no reserve, all lots in the catalog are subject to a reserve. The reserve is the minimum auction price that the consignor is willing to accept for a lot. This amount is confidential and does not exceed the low estimate value.

Auction House's Interest in Property Offered at Auction

On occasion, Bonhams may offer property in which it has an ownership interest in whole or in part or otherwise has an economic interest. Such property, if any, is identified in the catalog with a \blacktriangle symbol next to the lot number(s).

Bonhams may also offer property for a consignor that has been guaranteed a minimum price for its property by Bonhams or jointly by Bonhams and a third party. Bonhams and any third parties providing a guarantee may benefit financially if the guaranteed property is sold successfully and may incur a financial loss if its sale is not successful. Such property, if any, is identified in the catalog with a \circ symbol next to the lot number(s).

Bidding at Auction

At Bonhams, you can bid in many ways: in person, via absentee bid, over the phone, or via Bonhams' live online bidding facility. Absentee bids can be submitted in person, online, via fax or via email.

Valid Bonhams client accounts are required to participate in bidding activity. You can obtain registration information online, at the reception desk or by calling our Client Services Department.

By bidding at auction, whether in person or by agent, by absentee bid, telephone, online or other means, the buyer or bidder agrees to be bound by the Conditions of Sale.

Lots are auctioned in consecutive numerical order as they appear in the catalog. Bidding normally begins below the low estimate. The auctioneer will accept bids from interested parties present in the saleroom, from telephone bidders, and from absentee bidders who have left written bids in advance of the sale. The auctioneer may also execute bids on behalf of the consignor by placing responsive or consecutive bids for a lot up to the amount of the reserve, but never above it.

We assume no responsibility for failure to execute bids for any reason whatsoever.

In Person

If you are planning to bid at auction for the first time, you will need to register at the reception desk in order to receive a numbered bid card. To place a bid, hold up your card so that the auctioneer can clearly see it. Decide on the maximum auction price that you wish to pay, exclusive of buyer's premium and tax, and continue bidding until your bid prevails or you reach your limit. If you are the successful bidder on a lot, the auctioneer will acknowledge your paddle number and bid amount.

Absentee Bids

As a service to those wishing to place bids, we may at our discretion accept bids without charge in advance of auction online or in writing on bidding forms available from us. "Buy" bids will not be accepted; all bids must state the highest bid price the bidder is willing to pay. Our auction staff will try to bid just as you would, with the goal of obtaining the item at the lowest bid price possible. In the event identical bids are submitted, the earliest bid submitted will take precedence. Absentee bids shall be executed in competition with other absentee bids, any applicable reserve, and bids from other auction participants. A friend or agent may place bids on your behalf, provided that we have received your written authorization prior to the sale. Absentee bid forms are available in our catalogs, online at www.bonhams.com/us, at offsite auction locations, and at our San Francisco, Los Angeles and New York galleries.

By Telephone

Under special circumstances, we can arrange for you to bid by telephone. To arrange for a telephone bid, please contact our Client Services Department a minimum of 24 hours prior to the sale.

Online

We offer live online bidding for most auctions and accept absentee bids online for all our auctions. Please visit www.bonhams.com/us for details.

Bid Increments

Bonhams generally uses the following increment multiples as bidding progresses:

\$50-200	by \$10s
\$200-500	by \$20/50/80s
\$500-1,000	by \$50s
\$1,000-2,000	by \$100s
\$2,000-5,000	by \$200/500/800s
\$5,000-10,000	by \$500s
\$10,000-20,000	by \$1,000s
\$20,000-50,000	by \$2,000/5,000/8,000s
\$50,000-100,000	by \$5,000s
\$100,000-200,000	by \$10,000s
above \$200,000	at auctioneer's discretion

The auctioneer may split or reject any bid at any time at his or her discretion as outlined in the Conditions of Sale.

Currency Converter

Solely for the convenience of bidders, a currency converter may be provided at Bonhams' auctions. The rates quoted for conversion of other currencies to U.S. Dollars are indications only and should not be relied upon by a bidder, and neither Bonhams nor its agents shall be responsible for any errors or omissions in the operation or accuracy of the currency converter.

Buyer's Premium

A buyer's premium is added to the winning bid price of each individual lot purchased, at the rates set forth in the Conditions of Sale. The winning bid price plus the premium constitute the purchase price for the lot. Applicable sales taxes are computed based on this figure, and the total becomes your final purchase price.

Unless specifically illustrated and noted, fine art frames are not included in the estimate or purchase price. Bonhams accepts no liability for damage or loss to frames during storage or shipment.

All sales are final and subject to the Conditions of Sale found in our catalogs, on our website, and available at the reception desk.

Payment

All buyers are asked to pay and pick up by 3pm on the business day following the auction. Payment may be made to Bonhams by cash, checks drawn on a U.S. bank, money order, wire transfer, or by Visa, MasterCard, American Express or Discover credit or charge card or debit card. All items must be paid for within 5 business days of the sale. Please note that payment by personal or business check may result in property not being released until purchase funds clear our bank. For payments sent by mail, please remit to Cashier Department, 220 San Bruno Avenue, San Francisco, CA 94103.

Sales Tax

California, Arizona, Colorado, Connecticut, Florida, Georgia, Illinois, Nevada, New York, Massachusetts, Pennsylvania, Texas, Washington state and Washington DC residents must pay applicable sales tax. Other state or local taxes (or compensating use taxes) may apply. Sales tax will be automatically added to the invoice unless a valid resale number has been furnished or the property is shipped via common carrier to destinations outside the states listed above.

Shipping & Removal

Bonhams can accommodate shipping for certain items. Please contact our Cashiers Department for more information or to obtain a quote. Carriers are not permitted to deliver to PO boxes.

International buyers are responsible for all import/export customs duties and taxes. An invoice stating the actual purchase price will accompany all international purchases.

Collection of Purchases

Please arrange for the packing and transport of your purchases prior to collection at our office. If you are sending a third party shipper, please request a release form from us and return it to +1 (212) 644 9009 prior to your scheduled pickup. To schedule collection of purchases, please call +1 (212) 644 9001.

Auction Results

To find out the final purchase price for any lot following the sale, please call our automated auction results line at +1 (800) 223 2854 ext. 3400. All you need is a touch-tone telephone and the lot number. Auction results are usually available on the next business day following the sale or online at www.bonhams.com/us.

IMPORTANT NAMES & NOTICES

DIAMONDS, COLORED STONES & PEARLS

The Jewelry department of Bonhams & Butterfields recognizes that there are many various forms of treatments and enhancements used in diamonds and colored stones in order to improve their appearance and or color. Techniques such as heat treatment have been used to improve the color and transparency of both sapphires and rubies in addition to other gemstones. Techniques such as oiling have been used to enhance the clarity of emeralds while dying has been used to effect the color of jade. Techniques such as heat treatment, oiling, resin impregnation, irradiation, color diffusion, dying, fracture filling, and HTHP are just a few off the techniques that are in use today. Prospective buyers are therefore reminded that unless otherwise noted in our catalog description it must be assumed that some form of enhancement may have been used and that such treatment may not always be permanent or detectable and that our estimates have taken such possibilities into account. As a matter of policy, Bonhams & Butterfields endeavors to obtain certificates from recognized gemological laboratories when such certificates are deemed crucial to the authenticity of a gemstone. It is not possible however to gain certificates for all items offered for sale and it is therefore recommended where there is no mention of a certificate that all prospective buyers consult with one of our department specialists prior to purchase of such items.

PLEASE NOTE: A number of laboratories issue certificates that give more detailed descriptions of gemstones, however there may not be consensus between different laboratories on the degrees, or types of treatment for any particular gemstone. Neither is there necessarily consensus between different laboratories, or private appraisers, on the grading of diamonds. All gemstone weights are approximations only and although an independent laboratory grading may be used in the catalog text, we cannot guarantee such gradings.

Images shown may appear smaller or larger than actual size.

Although we endeavor to mention in our descriptions significant defects, needed repairs, absent stones and the like, **WE DO NOT GUARANTEE THAT THE DESCRIPTIONS ARE COMPREHENSIVE.** Please examine all lots carefully. It is the responsibility of the prospective bidder, or his agent, to determine the condition of lots during the preview. Condition reports have been created for most lots in this auction, and are available upon request. Please contact the Jewelry department at least two days prior to the sale date for additional information.

NOTICE REGARDING BURMESE JADEITE AND RUBIES

Current law dictates that jadeite and rubies of Burmese origin and any articles of jewelry containing jadeite or rubies of Burmese origin may not be imported into the U.S. Certification that such jadeite or rubies were not mined in or extracted from Burma is required for importation of them into the U.S.

It is the responsibility of the buyer to investigate any applicable restrictions on purchased property and to obtain any export or import licenses and/or certificates as well as any other required documentation before shipping. The buyer's inability to export or import any such items or to do so timely shall not serve as the basis for any cancellation or rescission of the sale or any delay in payment. Prospective buyers who are uncertain as to whether a lot is subject to these restrictions or any other restrictions on importation or exportation are advised to consult with the specialist department in which the property is offered.

REGULATED SPECIES MATERIALS AND CITES PERMITS

The export of a lot from the United States or import into certain countries may be subject to export or import regulations, licensure and/or other restrictions; in particular, lots containing plant or animal materials such as ivory, rhinoceros horn, tortoiseshell, coral, whalebone or certain types of woods, irrespective of age or value, may require the granting of one or more export or import licenses

or certificates, or may be banned from import altogether by some countries. Moreover, the ability to obtain an export license or certificate does not insure the ability to obtain an import license or certificate in another country. Lots that contain such regulated species materials may also not be eligible for exportation or for re-importation into the United States if they are not at least 100 years of age, and, under current law, lots containing African Elephant Ivory may no longer be re-imported into the United States regardless of age. In addition, resales of lots containing certain regulated species materials may be subject to restrictions in some jurisdictions.

Lots noted in the catalog with a **Y** next to the lot number contain one or more such regulated plant or animal materials. **It is the buyer's responsibility to investigate any such restrictions and to obtain any relevant export or import licenses. Please note that this process is governed by local authorities and may take considerable time. Regardless of any delay in the obtaining of an export or import license or certificate or denial of a license's or certificate's issuance, purchased lots shall be paid for in accordance with the Conditions of Sale, and any such delay or denial shall not serve as the basis for cancellation of any sale.** Prospective buyers are advised to obtain information from the relevant regulatory authorities regarding export and import restrictions, requirements, and costs prior to bidding.

Prospective buyers should also check with their local (e.g. state) regulatory authorities regarding any local restrictions and/or permit requirements that may apply with respect to purchases of regulated species materials, including without limitation purchases of items containing elephant ivory or rhino horn. For example, we are advised that New York buyers of any lot containing elephant or mammoth ivory or rhino horn will be responsible for obtaining a New York State permit before taking possession of the lot within New York State, and that the State of New Jersey has banned the import of items containing elephant or marine mammal ivory or rhino horn into that state.

Upon request, Bonhams can refer the purchaser to a third party agent to assist the purchaser in attempting to obtain the appropriate licenses and/or certificates. However, there is no assurance that any necessary licenses or certificates can be obtained. Please contact the Specialist Department for a suggested list of shipping agents prior to placing a bid if you are uncertain as to whether a lot is subject to export/import license or certificate requirements or related restrictions.

WATCHES

Although we endeavor to mention in our descriptions significant defects, needed repairs, absent stones and the like, **WE DO NOT GUARANTEE THAT THE DESCRIPTIONS ARE COMPREHENSIVE.** Please examine all watches carefully. It is the responsibility of the prospective bidder, or his agent, to determine the condition of watches during the preview. Except as expressly set forth in the Conditions of Sale, all watches are sold "as is". We do not guarantee the accuracy or operation of any watch function such as timekeeping, chronograph, calendar, repeater or register.

We make no judgments as to whether diamond dials or diamond bezels originated at the factory or are later additions.

Auction Registration Form

(Attendee / Absentee / Online / Telephone Bidding)

Please circle your bidding method above.

Bonhams

--	--	--	--

Paddle number (for office use only)

General Notice: This sale will be conducted in accordance with Bonhams Conditions of Sale, and your bidding and buying at the sale will be governed by such terms and conditions. Please read the Conditions of Sale in conjunction with the Buyer's Guide relating to this sale and other published notices and terms relating to bidding. Payment by personal or business check may result in your property not being released until purchase funds clear our bank. Checks must be drawn on a U.S. bank.

Notice to Absentee Bidders: In the table below, please provide details of the lots on which you wish to place bids at least 24 hours prior to the sale. Bids will be rounded down to the nearest increment. Please refer to the Buyer's Guide in the catalog for further information relating to instructions to Bonhams to execute absentee bids on your behalf. Bonhams will endeavor to execute bids on your behalf but will not be liable for any errors or non-executed bids.

Notice to First Time Bidders: New clients are requested to provide photographic proof of ID - passport, driving license, ID card, together with proof of address - utility bill, bank or credit card statement etc. Corporate clients should also provide a copy of their articles of association / company registration documents, together with a letter authorizing the individual to bid on the company's behalf. Failure to provide this may result in your bids not being processed. For higher value lots you may also be asked to provide a bankers reference.

Notice to online bidders: If you have forgotten your username and password for www.bonhams.com, please contact Client Services.

If successful

- I will collect the purchases myself
- Please contact me with a shipping quote (if applicable)
- I will arrange a third party to collect my purchase(s)

Please mail or fax the completed Registration Form and requested information to:

Bonhams Client Services Department
 580 Madison Avenue
 New York, New York 10022
 Tel +1 (212) 644 9001
 Fax +1 (212) 644 9009
 Automated Auction Results
 Tel +1 (415) 503 3410

Sale title:		Sale date:	
Sale no.		Sale venue:	
General Bid Increments:			
\$10 - 200	by 10s	\$10,000 - 20,000	by 1,000s
\$200 - 500	by 20 / 50 / 80s	\$20,000 - 50,000	by 2,000 / 5,000 / 8,000s
\$500 - 1,000	by 50s	\$50,000 - 100,000	by 5,000s
\$1,000 - 2,000	by 100s	\$100,000 - 200,000	by 10,000s
\$2,000 - 5,000	by 200 / 500 / 800s	above \$200,000	at the auctioneer's discretion
\$5,000 - 10,000	by 500s	The auctioneer has discretion to split any bid at any time.	
Customer Number		Title	
First Name		Last Name	
Company name (to be invoiced if applicable)			
Address			
City		County / State	
Post / Zip code		Country	
Telephone mobile		Telephone daytime	
Telephone evening		Fax	
Telephone bidders: indicate primary and secondary contact numbers by writing ① or ② next to the telephone number.			
E-mail (in capitals) _____			
By providing your email address above, you authorize Bonhams to send you marketing materials and news concerning Bonhams and partner organizations. Bonhams does not sell or trade email addresses.			
I am registering to bid as a private client <input type="checkbox"/>		I am registering to bid as a trade client <input type="checkbox"/>	
Resale: please enter your resale license number here _____ We may contact you for additional information.			

SHIPPING	
Shipping Address (if different than above):	
Address: _____	Country: _____
City: _____	Post/ZIP code: _____

Please note that all telephone calls are recorded.

Type of bid (A-Absentee, T-Telephone)	Lot no.	Brief description (In the event of any discrepancy, lot number and not lot description will govern.) If you are bidding online there is no need to complete this section.	MAX bid in US\$ (excluding premium and applicable tax) Emergency bid for telephone bidders only*

You instruct us to execute each absentee bid up to the corresponding bid amount indicated above.

* Emergency Bid: A maximum bid (exclusive of Buyer's Premium and tax) to be executed by Bonhams only if we are unable to contact you by telephone or should the connection be lost during bidding.

BY SIGNING THIS FORM YOU AGREE THAT YOU HAVE READ AND UNDERSTAND OUR CONDITIONS OF SALE AND SHALL BE LEGALLY BOUND BY THEM, AND YOU AGREE TO PAY THE BUYER'S PREMIUM, ANY APPLICABLE TAXES, AND ANY OTHER CHARGES MENTIONED IN THE BUYER'S GUIDE OR CONDITIONS OF SALE. THIS AFFECTS YOUR LEGAL RIGHTS.	
Your signature: _____	Date: _____



Bonhams

580 Madison Avenue
New York, New York 10022

+1 212 644 9001
+1 212 644 9009 (fax)

